

THE sharp

T R A V E L L E R

GOOD THINGS
IN MELBOURNE
THIS EASTER



DESTINATION

FIELD OF DREAMS



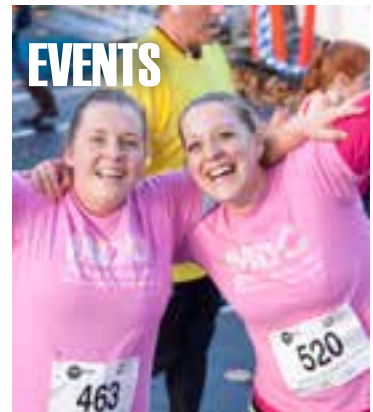
ACTIVITIES

EASTER HOLIDAY
KIDS FUN



FOOD

FLINDERS ISLAND
PRODUCE



EVENTS

MOTHER'S DAY
CLASSIC

TAKE HOME YOUR SLICE OF *Paradise....*



....And we'll pay the freight for you!

Flinders Island Meat is one of the most sought after brands by some of Australia's top chefs. The salty pastures, the ideal climate, and old style honest farming practices combine to produce a meat that is hard to beat.

You too can experience the Flinders Island difference, at our on-island butcher shop. And when you purchase one of our 5kg or 10kg Visitor Packs, we will cover the excess baggage costs to Launceston or Melbourne when you travel with Sharp Airlines.

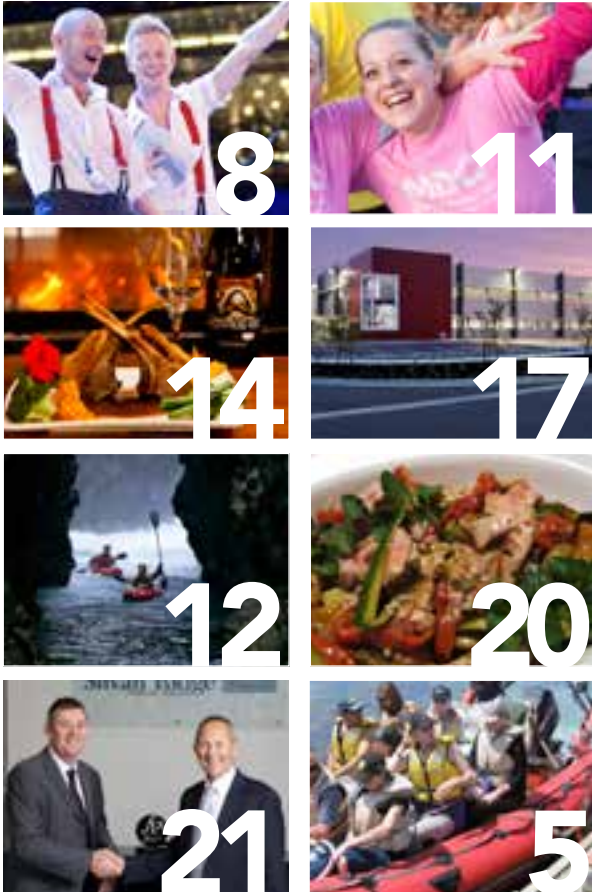
Come in-store to find out more about taking home
your own slice of *Paradise*

Taste The Difference

**FLINDERS
ISLAND**
Meat

Flinders Island Meat Butcher Shop, 3 Walker St, Whitemark, Flinders Island
Ph: (03) 6359 2005

Contents



What's On	5
The Sharp Files	6
Melbourne Easter	8
Mother's Day Classic	11
Mountain Films on Show	12
Pure Flinders Island Produce	14
Essendon Airport Upgrade	17
Recipes	20
Business Profile	21
> Silvan Ridge Financial Services	21
Sharp Minds	22
Sharp Kids	23
Flight Schedules	24
> Melbourne (Essendon)	24
> Adelaide	25
> Flinders Island & Launceston	25
> King Island	25
Where we Fly	26

a fresh approach to your accounting services

- Personal Business Advice
- Improved Profitability
- Increased Cash Flow
- Succession Planning
- Business Valuations
- Start Up Advice
- Self Managed Super Funds
- Tax Planning
- Tax Returns



Silvan Ridge
BUSINESS ADVISERS

132a Lava Street Warrnambool. Phone 5559 7111
Suite 4 McIntyre Arcade Portland. Phone 5523 2287

Welcome



Dear Sharp Travellers

Autumn can be a delightful, yet busy, time of year. This edition of Sharp Traveller encapsulates the new season, highlighting Easter and Mother's Day as two major events during this time of year.

Sharp Airlines can take you to some fantastic autumn destinations, such as Melbourne, Portland and Launceston. Easter is a special time of year in Melbourne, kicking off with the Good Friday Appeal, which raises money for our much-loved Royal Children's Hospital. As always, Melbourne has plenty to offer for school holiday fun, and is a great family getaway destination.

The sea-side town of Portland is also thriving during autumn, with plenty of fish to be caught. Or maybe it's a holiday to beautiful Tasmania you are after? Sharp Airlines can take you to Launceston, Burnie, Flinders Island or King Island. Flinders Island is a wine

lover and foodies' delight, showcasing delicious local produce to tempt everyone's palate.

The Sharp Traveller, our in-flight magazine, is read by more than 150,000 people. We hope you enjoy this edition and all that autumn has to offer, with a vast array of events in Victoria, Tasmania and South Australia. An interstate destination is just a short trip away with Sharp Airlines.

Happy and safe travelling,

Malcolm Sharp
Director



To see a full list of events on at each Sharp Destination visit – sharpairlines.com.au

If you would like to include your event email community@sharpairlines.com.au



PORT AUGUSTA

Pichi Richi Marathon, Port Augusta, 30 June 2013

Enjoy a run, jog or walk as families and seasoned marathon runners alike join the Pichi Richi Marathon from Port Augusta to Quorn in South Australia's beautiful mid-North, southern tip of the Flinders Ranges.

The event offers four length stages suit everyone's fitness level or time availability: Full marathon, half marathon, a 10.5 kilometre leg, and a one kilometre fun run for kids.

The day finishes on the Quorn Oval for a bite to eat, drink and prize presentations.

Organised by the Rotary Club of Port Augusta, everyone is welcome to enter this fun community event that follows the famous Pichi Richi Steam Train Railway path to Quorn.

www.rotaryportaugusta.org.au



KING ISLAND

The Queenscliff to Grassy Yacht Race

The Queenscliff to Grassy Yacht Race was first sailed in the 1970's and since then has become a major fixture on the Australian Ocean Racing calendar.

The race is organised by the Ocean Racing Yacht Club of Victoria in conjunction with the King Island Boat Club and sailed on the Victorian Labour Day long weekend in March.

Visitors are welcome at the King Island Boat Club during the race weekend and can experience first hand the excitement of finishing yachts sailing into Grassy Harbour, meeting with crew members and locals alike while enjoying great food and refreshments at the boat club.

Contact John Brewster 0427 875 832



PORTLAND

Sea by Seal Tours

Seals by Sea Tours at Cape Bridgewater, 20 kilometres west of Portland, is a world class tour. It is an exciting boat charter which takes up to 11 passengers to the largest mainland seal colony in Australia. See up to 1000 Australian and New Zealand fur seals. It takes just 3 minutes from the cast off jetty to be alongside the rock platforms and into the watery cave where you will experience a unique interaction within the seals' natural habitat.

www.sealsbyseatours.com.au



Deep Bite

CAFE • RESTAURANT • STORE

Flinders Island

TASMANIA



Restaurant dining with spectacular view of Mt Killiecrankie

527 Killiecrankie Rd, Killiecrankie, Flinders Island • (03) 6359 8499

Email: deepbitecafe@gmail.com • Night Dining Bookings preferred

The Sharp Files

DID YOU KNOW...

1. You can take a self-guided tour of Portland's 200 beautifully maintained historic buildings ?
2. Launceston was the site of the first licensed hotel in Australia in 1814?
3. Port Augusta is known as a gateway to the northern and central Flinders Ranges, where you can go for a camel ride?
4. Flinders Island hosts the Three Peaks Race at Easter each year. Boats arrive from the first leg with runners from each boat running from Lady Barron to the top of Mt Strzelecki and back?
5. Adelaide City Council offers free city hire bikes, available from the council customer centre, Adelaide Convention Centre or Adelaide Zoo?
6. Burnie is home to paper making classes at the Makers' Workshop, where people can learn the art of making paper by hand?
7. Hamilton, Victoria, is home to the Ansett Transport Museum, where you can ingest all there is to know about Australia's aviation history?
8. Launceston and the Tamar Valley is home to Australia's best sparklings, zesty rieslings, superb cool-climate chardonnays and complex pinot noirs?
9. The Aboriginal Heritage Walk offers a rich and vibrant cultural experience when in Melbourne, including a traditional smoking ceremony, traditional uses for food, tools and medicine?
10. A Calcified Forest is located half an hour south of Currie, on King Island, where the remains of an ancient forest up to 7000 years old were revealed when the lime-laden sand was exposed?

JOIN NOW ...

It takes 2 minutes online and doesn't cost a cent. You will receive your membership number and password immediately by email

» Your SharpFlyer card will be sent to you within 30 days

Visit sharppairlines.com.au to join.

Would you like to be a SharpFlyer?

To join give the completed form to friendly a Sharp Airlines staff member or complete the form at SharpFlyer.com.au

Your Details

Please circle
Mr Mrs Ms Miss Dr other

First Name

Last Name

Date of Birth / /

Email

Telephone

Mailing Address for your SharpFlyer card

Street

Town/Suburb

State Postcode



I agree to SharpFlyer terms & conditions.

To view the terms and conditions or find out more information visit SharpFlyer.com.au

Flinders Island Fly-Drive Holidays

Flinders Island

Unspoilt, unexploited, unbelievable and just over an hour scenic flight from Melbourne, even less from Launceston.

Holidays from just

\$522*

Choose your perfect escape with Sharp Airlines.

* Conditions apply please see website

Our **Sharp Airlines** holiday package includes return airfares, self contained cottage accommodation and late model hire car.

Prices start at **\$522**, for prices from Launceston and Melbourne

Flinders Island Fly-Drive Holidays

Discover the perfectly private beaches, rugged mountain ranges, rolling farm vistas, spectacular island lookouts, birdlife lagoons, wildlife, island history and spectacular fishing it's all here in an archipelago of over 63 wilderness islands.

Take your late model hire car, pack a picnic hamper, bring along your favourite rod and reel and prepare yourself for the perfect escape. visit www.sharpairlines.com.au to view the Flinders Island Accommodation options



Flinders Island is...

Flinders Island is all about escaping-no more noise, no more stress-just the sheer bliss of unwinding and relaxing in a truly beautiful and peaceful setting, abundant with nature's gifts. Indulge in the Island's gourmet produce and fresh local seafood.

For more information or a brochure click here for a Bass Strait Magic Brochure For Reservations and Enquiries please call: Sharp Airlines **1300 55 66 94**.



visit www.sharpairlines.com.au



GOOD THINGS A PLENTY IN MELBOURNE AT EASTER



MELBOURNE at Easter time traditionally begins with the Royal Children's Hospital Good Friday Appeal.

The world renowned hospital treats children from not only Victoria but from Tasmania, southern New South Wales and other states in Australia and overseas.

The hospital's life-saving services depend on the Good Friday Appeal, which has raised more than \$245 million since it started in 1931.

Stage two of the new hospital works, including demolition of the old hospital (turning it into parkland) is set to be completed in late 2014.

While many people, mostly volunteers, work throughout the year to raise money for the Good Friday Appeal, the whole of Victoria turns its attention to the appeal on Good Friday.



Up Close

Hop over to an Easter Egg Hunt

There is a huge range of fundraising activities held on Good Friday, this year on March 29, including the Cadbury Easter Egg Hunt and Family Picnic at Werribee Park.

The egg hunt not only allows families to contribute to the Good Friday Appeal but also celebrate Easter.

This year's hunt, the 12th annual event, is set to be bigger and better than ever with new acts, rides, arts and crafts and much more for the whole family to enjoy.

Children aged from three to 12 years old can take part in the egg hunt, which has more than half a million Cadbury Easter eggs.

Tickets for the Cadbury Easter Egg Hunt and Family Picnic go on sale in February 2013 from Ticketek. All entry ticket profits and proceeds from Easter egg sales and raffles go directly to the appeal.

But tickets are limited, so be sure to get in early!

Easter activities continue on Easter Saturday, and throughout the school holidays, at Harbour Town, at Docklands.

There will be Easter egg hunts, roving entertainers, an animal farm and live music performances – all for free.

In fact Melbourne is a mecca for Easter egg hunts, with the Greatest Ever Easter Hunt

CADBURY EASTER EGG HUNT

29 March

Werribee Park, K Road Werribee

Web: cadbury.com.au

POLLY WOODSIDE

South Wharf on the banks of the Yarra River

Opening Hours: Thursday to Sunday: 10.00am to 4.00pm

Web: pollywoodside.com.au

MELBOURNE INTERNATIONAL COMEDY FESTIVAL

27 March – 21 April

Web: comedyfestival.com.au



give that they may grow



good Friday appeal

Herald Sun | 3000 | 03 9593 1000



at Caulfield Racecourse, in aid of Zaidee's Rainbow Foundation, an organ and tissue donor awareness charity.

More than 500,000 Easter eggs, donated by chocolatier Ernest Hillier, will be scattered amongst the grass.

Several hunts throughout the afternoon of Easter Saturday are organised for specific age groups of children.

More Easter egg hunts are held in Melbourne and various regional centres during the school holidays, including at the Enchanted Maze Garden, in Arthurs Seat on the Mornington Peninsula.

A-hoy there, pirates in training

When your belly is full of chocolate and you are looking for other family-friendly events during the school holidays, why not get your sea legs, grab an eye-patch and learn to be a pirate?

Join Polly Woodside, Melbourne's own tall ship located at South Wharf, for Pirate Sundays. Held on the first Sunday of each month, young pirates can search for treasure and have their faces painted. Check the Polly Woodside website for more details.

Giggle and Hoot the night away

And the fun in Melbourne isn't just for the kids – adults are sure to get a laugh out of the Melbourne International Comedy

Festival.

The festival, in its 26th year, is one of the three largest comedy festivals in the world, alongside Edinburgh Festival Fringe and Montreal's Just for Laughs Festival

A program of stand-up comedy, cabaret, theatre, street performance, film, television, radio and visual arts from March 27 to April 21, 2013, cements Melbourne as the country's comedy capital.

With attendances of more than 600,000 in recent years, the festival has grown to be Australia's largest cultural event.

It is also an affordable outing too, with the average ticket price just \$26.

The Melbourne Town Hall is converted into a larger-than-life comedy hub, but the festival doesn't just stop in the city. The festival's annual road show travels across Australia, and last year to Singapore and Hong Kong, to bring laughs to more than 80,000 comedy lovers.



FLINDERS ISLAND HOLIDAY PALANA RETREAT

Modern two storey, two bedroom, two bathroom accommodation with spa, open fire etc...

Overlooking Blyth Bay, Pratts River and the Inner and Outer Sister Islands.

Car available.

Liquor License and Free Internet access.

We offer a pickup and delivery service from Whitemark Airport.

Contact Judy Armstrong & Daryl Butler

Phone: (03) 6359 8566

Mobile: 0438 622 555

Email: daryl@palanaretreat.com.au

Web: www.palanaretreat.com.au

4756 Palana Rd, Flinders Island





A CLASSIC MOTHER'S DAY ACTIVITY

Raising money for breast cancer research is the perfect way to spend Mother's Day in 2013.

The Mother's Day Classic, where women, men and children come together to run or walk, is held in various locations throughout Australia.

The annual event recognises those women who survived breast cancer and remembers those who passed away from the illness.

This year's event is on Sunday May 12.

The Melbourne event is at the beautiful, inner-city Alexandra Gardens and famous

Tan Track, traditionally attracting about 44,000 people.

Adelaide participants will this year run or walk along the Linear Route and through the Botanic Gardens to the new location of Peace Park.

Women in Super, a national advocacy and networking group for women employed in the superannuation and financial services industries, organise the event.

All proceeds from the Mother's Day Classic are donated to the National Breast Cancer Foundation, a not for profit organisation that promotes and supports research into breast cancer prevention and treatment.

The Mother's Day Classic has raised \$14.8 million dollars since 1998.

In 2012, a record 125,000 people across Australia ran or walked in a Mother's Day Classic event in 10 cities and 54 regional locations.

Participants and fundraisers raised \$4 million for National Breast Cancer Foundation research programs - the highest amount of funds in the event's fifteen year history.

Regional events in Ballarat, Ararat, Warrnambool and Mt Gambier, while on a smaller scale, are held with the same enthusiasm and respect for people who have been affected by breast cancer.

To register visit www.mothersdayclassic.com.au



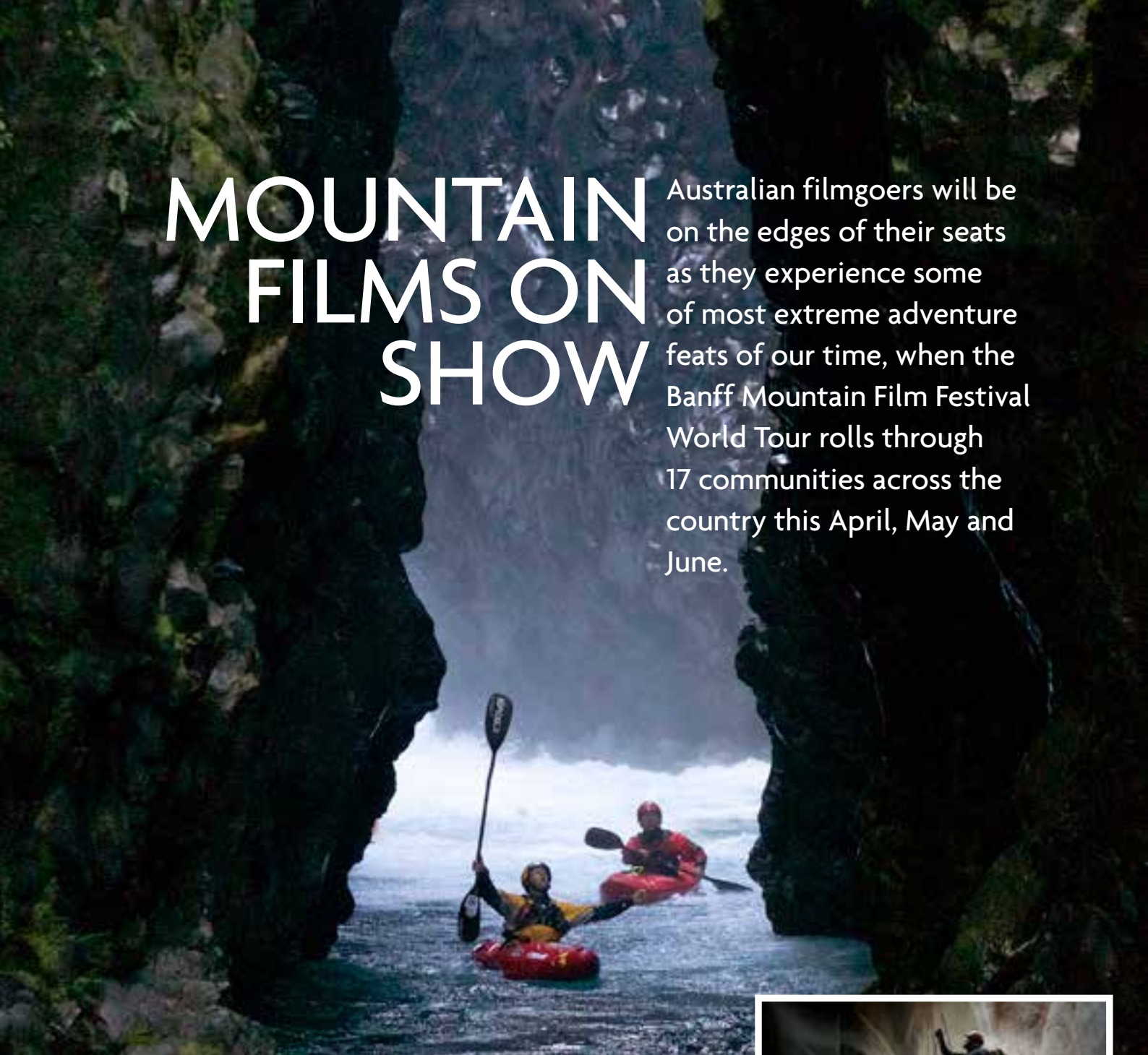
Boutique Handkerchiefs for women, men & children

Featuring a range of vintage and new fabrics

Visit our e-boutique store at boutiqueh.com.au

MOUNTAIN FILMS ON SHOW

Australian filmgoers will be on the edges of their seats as they experience some of most extreme adventure feats of our time, when the Banff Mountain Film Festival World Tour rolls through 17 communities across the country this April, May and June.



The tour is hot on the heels of the largest – and one of the most prestigious – mountain festivals in the world, the Banff Mountain Festival, which takes place every November in the mountain town of Banff, in Canada.

More than 300 of the world's best mountain sport, culture, environment, adventure, and exploration films are shown during the week-long event. A selection of award winners and audience favourites then tours the globe, visiting 390 communities and 35 countries as part of the festival's official world tour.

This year, the Australian line-up features two-and-a-half hours of captivating footage shot in some of the most wild

and remote corners of the world. Sure to enthral, it showcases 11 films packed full of mesmerising cinematography, thought-provoking storylines and adrenalin-inducing action sequences.

Audiences will experience incredible highs and agonising lows through the lenses of some of the most accomplished climbers, paddlers, skaters, snowboarders, canyoneers, mountain-bike riders, explorers and adventure filmmakers alive today.

On their quests for higher vantage points, faster speeds and even more out-of-the-way places, they'll lead you on a journey of discovery from Antarctica's icy rim to the South Pole and back, to the top of





Australian

CROSSING THE ICE

Directed by: Justin Jones

Produced by: Justin Jones, Greg Quail, Doug Howard

Classification: General (coarse language)

Focus: Adventure and exploration

AWARD WINNER: FESTIVAL GRAND PRIZE, PEOPLE'S CHOICE & BEST FILM ON EXPLORATION & ADVENTURE

Aussie adventurers James Castrission and Justin Jones embark upon a perilous 2275km journey across Antarctica in a race to become the first people to man-haul their way from the icy continent's rim to the South Pole and back, completely unassisted. In the past, a handful of hopefuls have attempted the feat, but none have succeeded. Dragging their food and supplies across the unforgiving landscape, in temperatures as low as -40°C, the pair experiences the peaks and troughs of being alone and unsupported in one of the harshest environments on Earth. Their journey heats up when they discover their record attempt is in jeopardy; there's a Norwegian on the ice. He's more experienced, he's tackling same route, and he has a head start. This inspiring, not-to-be-missed film won the festival's grand prize. It took out the people's choice award and won best film in the 'exploration and adventure' category.

Yosemite's vertical walls, through deep powder in Japan, down fast-flowing white-water drops in New Zealand, high into the mountain ranges of Colorado, deep into the Grand Canyon, through an abandoned industrial site in Scotland, over an ice edge in Norway and on a high-speed road trip through Spain.

Presented by World Expeditions, the Banff Mountain Film Festival World Tour will hit cinemas across Australia from mid-April until the end of June, 2013. Tickets are on sale now, but be warned to book early as screenings often sell out in advance.

To view the trailer, read about the 2013 films, and book tickets, visit www.banffaustralia.com.au

Up Close

BANFF MOUNTAIN FILM FESTIVAL

The Capri Theatre, Adelaide, on May 25

The Capitol Theatre RMIT in Melbourne on June 19, 20, 21 and 22

The Tramsheds, Launceston, on June 13 and 14.

Web: www.banffaustralia.com.au





Pure Flinders Island is the latest Flinders Island business seeking to produce and market products derived from the natural resources provided and inspired by the island's sea, earth and pasture.

There is an increasing health focus today on products from pristine environments and organic sources, two areas where Flinders Island triumphs.

Pure Flinders Island is a joint venture between John Wells' Ocean Omegas, a long-established operation producing a range of health products from mutton bird oil, and island residents Ken Stockton and Carolyn Dawe.

The new range of products utilises mutton bird livers, hearts and fat which are normally discarded.

The livers being fat and tendon free are ideal for the production of pates and terrines.

A range of mutton bird-based products are being trialled using locally grown wasabi, rosemary, garlic and wild bush pepper berries.

Local Chef at Chappels Restaurant Ken Stockton said he was most pleased that the previously discarded mutton bird was now being processed.

"We are very excited about the mutton bird liver products, the livers are clean, size consistent, tendon free and very easy to work with," he said.

"The trials with the hearts are very promising and I am anticipating that chefs will love the body fat for specialised cooking, much better than duck fat."

The establishment of Pure Flinders Island follows on from the many recent successes of local produce and organic growers.

Helen's Organic Farm has a long held organic certification through NASAA (National Association for Sustainable Agriculture, Australia) and produces salad mix, spring onions, snow peas and zucchini and wasabi for local restaurants, including Chappells and local supermarkets.

The wasabi is used in a variety of dishes utilising root, stem and leaf. In particular, the wasabi is blended with the mutton bird liver pate for a wonderful taste result.

Brymworth Farm, owned by Mark and Sophie Pitchford, is a small family farm located on Flinders Island.

The organically-certified business has grown over the past five years producing two varieties of garlic, Flinders Island Purple and Spanish Rojo.

The farm supplies the local market, Chappells restaurant and mainland restaurants. More information can be found at www.brymworthfarm.com.au.



Flinders Island's Partridge Farm

A Unique Accommodation Experience...

Four star accommodation with free range partridge, guinea pigs, Cape Barren geese, Rastus the alpaca, deer and dorper sheep, a large orchard, olive trees and vineyard.

Private modern units all with panoramic views of Franklin Sound

Each unit has a large wine and beer supply and meals prepared by Lorraine can be delivered to your unit, plus Rav4 4wd for hire

** Venue of SBS Gourmet Farmer long table lunch*



To find out more call Lorraine & Rob Holloway on 03 63593554



Other established producers on Flinders Island include:

- » Ocean Omegas, which produces mutton bird oil-based products, including very successful arthritis and eczema remedies, and other derivatives of mutton bird oil.
- » Flinders Island Olive Oil, known for its acclaimed Extra Virgin Olive Oil.
- » Unavale Wines, who produce award-winning cool climate wines.
- » Flinders Island Meats, featuring show-winning produce, including lamb, beef and wallaby.
- » Andrew Matthewson, who produces filtered natural honey.
- » Belling family, who grow potatoes and pumpkins.
- » John Rhodes, tomato producer.
- » Mike Freeman from Copperhead Rise Wines, renowned for their organic Pinot Noir.
- » Butter Factory Boys, makers of Pinot Noir.

There is a growing outside interest in products grown and produced on Flinders Island. Producers believe that value adding to the base products is so important to promote opportunities for sustainable employment of young islanders.

The future certainly looks bright and healthy, with a growing trend of people supporting the island's local producers and their endeavours to succeed.

CHAPPELLS RESTAURANT, FLINDERS ISLAND
STUNNING FOOD. STUNNING VIEWS.
PH. 03 63594586





FLY INTO A FIELD OF DREAMS

Essendon Fields is amongst Melbourne’s largest property developments, integrating commercial real estate with retail outlets in Melbourne’s North West.



This 305 mixed-use development site includes one of Melbourne’s secondary airports, Essendon Airport, and is being delivered by a joint venture between two of Melbourne’s most successful companies Linfox and Beck Corp. Their initial foresight to transform a large parcel of land connected to Essendon Airport has placed Essendon Fields among Melbourne’s largest and most successful property developments.

The partners converted a “sleeping giant” into useable land that would benefit the local area across a wide spectrum of opportunities and bring employment closer to the community, helping to provide a greater work-life balance.

Essendon Fields has a bright future as it continues to expand and redevelop.

One of Essendon Fields’ best qualities is location. As the city of Melbourne’s population centre is shifting north-west towards our site we see Essendon Fields as being a significant asset to the city in the near future,” says Chris Cowan, Chief Executive Officer of Essendon Fields.

Essendon Fields is five minutes from Melbourne’s International airport and ten minutes from the Melbourne Central Business District with direct links to Melbourne’s major transport arterials including Citylink, Tullamarine and



“We’re all about delivering quality projects with quality tenants, strong partnerships and making sure that we do everything in the best possible way.”

Calder Freeways as well as the Western Ring Road, it provides easy access for both trade customers and the general public via accessible public transport options.

“We’re all about delivering quality projects with quality tenants, strong partnerships and making sure that we do everything in the best possible way. We are going to be holding onto this property for a long period of time,” says Chris Cowan, CEO of Essendon Fields. “We will continue to build long term partnerships with tenants, as we grow into Melbourne’s premier business district.”

The site has steadily and impressively expanded into a thriving business district including headquarters for the Linfox Group, Armaguard, Insurance Manufacturers Australia, VicRoads.

In addition, we have improved the aviation infrastructure by building new aviation hangars and delivered a new home for Air Ambulance and the Victoria Police Air Wing. The Airport operation co-exists on site and continues to provide a valuable resource to regional Victoria and Tasmania.

There are three main retail precincts within the park. “We’ve built Auto Centro which carries nine major automotive brands, Ford, Mazda, Toyota, Honda, Hyundai, Chrysler, Jeep, Dodge, Volkswagen and Great Wall,” says Mr Cowan. “We will continue to build on the success of this precinct with the arrival of Nissan and Mitsubishi in mid 2013”. Essendon Fields Shopping Centre on English Street includes two supermarkets, a variety of specialty shops, cafes, gym, childcare centre and a bank. On Bulla Rd DFO and Homemaker Hub is arguably the best outlet offer in Australia.

Essendon Fields constantly improves its services, so that tenants always receive the highest quality possible. “We place

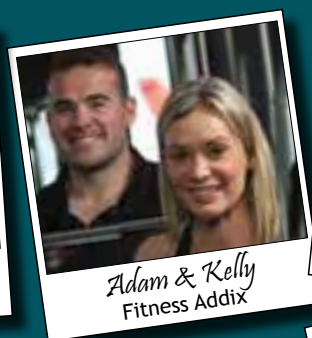


enormous emphasis on sustainability and green technology within the park utilising our Urban Design guidelines, our new office buildings are GreenStar rated and every project is architecturally designed to showcase environmental technology in water recycling, energy efficiency and environmental management” says Mr Cowan. “We’re using what we’ve learned, in future developments,” he added.

The company predicts growth coming from tenants who choose to relocate their business to a more employee friendly environment from an access, services and amenities point of view and with over 4,200 employees already, the long-term goal is to increase to 10,000 people.



For easier, friendlier shopping, say Hello to your friends at Essendon Fields Shopping Centre (adjacent to Essendon Airport Terminal)



www.essendonfields.com.au
9948 9400

Like us on  facebook/essendonfields and stay in touch with specials



CATCH YOUR LUNCH

Char-grill tuna and vegetables

Bluefin tuna fishing is popular in Portland, particularly from March to August. The south-western Victorian town is famous for their fishing, and many charter companies offer various adventures to experience offshore fishing for yourself.

What better way to enjoy your catch than a delicious and healthy char-grilled

vegetable and tuna stack. Within half an hour you can turn the best local produce from the south-west into a scrumptious meal for you and your family or friends. This dish would be perfect to celebrate Easter or Mother's Day.

Ingredients:

- » 4 baby eggplant
- » 4 flat mushrooms
- » 2 tomatoes
- » 1 red capsicum
- » 2 tuna steaks
- » 2 cups of basil leaves
- » 2 tablespoons of pine nuts
- » Prepared couscous
- » 2 tablespoons extra virgin olive oil
- » 2 teaspoons red wine vinegar
- » 2 teaspoons of seeded mustard

Method:

- » Pre-heat BBQ or char-grill to medium, and spray sliced vegetables with oil. Cook in batches for 5-10 minutes until tender and cooked through. Slice mushrooms.
- » Cook tuna for 2-3 minutes each side, until they are cooked to your liking. Rest for 5 minutes and slice.
- » Make up the dressing by whisking together all ingredients, season to taste.
- » Combine vegetables, tuna and basil in a bowl. Toss with dressing. Then present the tuna and vegetables on each individual plate, sprinkle with pine nuts and serve with couscous.

The Furneaux Tavern Flinders Island Tasmania



Situated on the waterfront the Furneaux Tavern is a favourite meeting place for locals and visitors and has one of Flinders Island's best views from the bar.

The Furneaux Tavern offers comfortable accommodation with 12 motel style units set amongst an acre of native gardens and magnificent water views.

The Tavern offers bistro dining in the Shearwater Restaurant, which serves local produce 7 days a week all year round.

Phone: 03 6359 3521

furneauxtavern.com.au



Award-winning financial service

SILVAN RIDGE FINANCIAL SERVICES

Silvan Ridge Financial Services Financial Adviser Shane Lenehan, pictured with practice principal Mike Raselli, was last month awarded the AMP Charter Licensee Value of Advice Award for Victoria/Tasmania. In addition to this award he also received the Financial Planning Association of Australia, AFP Best Practice Award.

Mr Lenehan's Value of Advice Award, is presented to a financial adviser based upon a real life situation, where the adviser is seen to go above and beyond what is normally expected of their duties.

To win the award an adviser must demonstrate expertise in all facets of financial planning and above all else, must show compassion for the client's financial and personal situation.

The FPA's AFT Best Practise Award, recognises the top tier of financial planners in Australia.

This national honour is presented only to advisers who show a willingness to embrace the Financial Planning Association's Code of Conduct along with an exceptional understanding of the financial planning process.

Mr Lenehan said that during his career his main aim was to always try to build an

ongoing relationship with his clients.

"It's never about a one-off transaction; it's all about encouraging an ongoing relationship with the client," Mr Lenehan said.

"It helps ensure that my clients' long and short term goals are always met."

He said the best part of his job was identifying and implementing appropriate strategies to help clients achieve their lifelong goals, both financially and in lifestyle.

Mr Lenehan joined Silvan Ridge Financial Services two years ago after gaining five years of experience in Perth. He is no stranger to the area, having spent most of his life in Port Fairy.

Silvan Ridge Principal Mike Raselli said the whole team was proud of the work that Shane had done since joining the practice two years ago.

"He has great skills, works very hard and will continue to expand on his knowledge,"

"The people of Warrnambool, Portland and the Western Region are fortunate to have advisers like Shane providing the highest possible level of financial advice," he said.

Mr Raselli said all of Silvan Ridges' financial advisers were fully qualified with the vast majority having achieved Certified Financial Planner status.

"This is the highest qualification in financial planning and is a worldwide recognised standard."

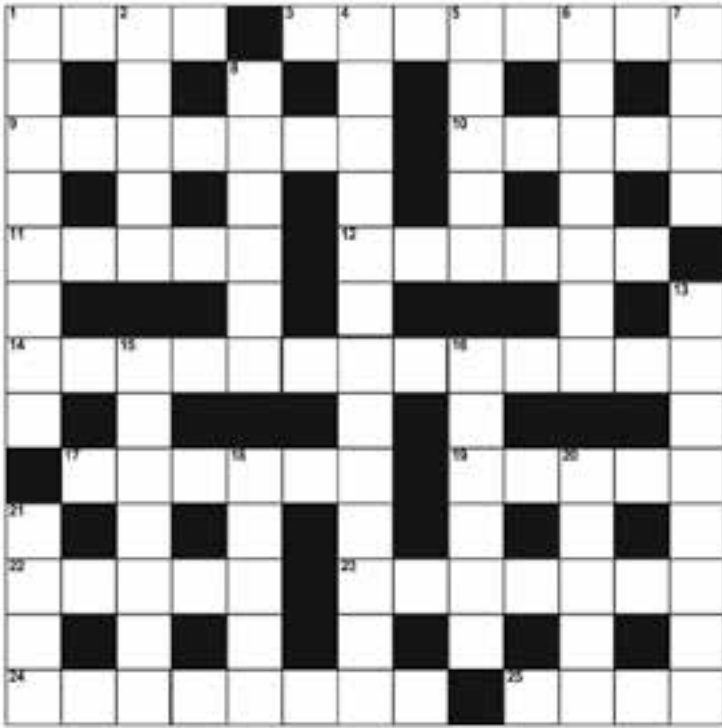
Mr Raselli said, as a Certified Quality Advice Practice operating under the Charter licence, Silvan Ridge Financial Services had an obligation to its clients to ensure that all advisers met the highest industry standards ensuring quality financial advice.

"This is something we take very seriously," he said.

Sharp Minds

Sharpen your brain with these tricky little quizzes!

CROSSWORD



ACROSS

1. Gentle - malleable (4)
3. Not actually stated (8)
9. Tower attached to mosque (7)
10. Prickly shrub (5)
11. Book of geography (5)
12. Book of geometry (6)
14. Play featuring Agincourt (5,3,5)
17. Cool self-assurance (6)
19. Type of fastening (5)
22. Indicate - purpose (5)
23. Great (mental) pain (7)
24. The couture business (3,5)
25. Temporary accommodation (4)

DOWN

1. Fellow-feeling (8)
2. Conclusive (5)
4. Her dog went boneless (6,7)
5. Reasoning (5)
6. Welsh city (7)
7. Long journey (4)
8. Reliable (6)
13. Gossip (8)
15. (Caught) asleep (7)
16. Seek for food (6)
18. Aquatic carnivore (5)
20. Sound of speech (5)
21. Incite(ment) (4)

WORD FIND

Transportation

C D E L S K T Y L E M A C M
 V A N L C N A E G S K I S C
 E H N U E C O A K O T E A T
 W N R O H V I W E C D I B C
 A T I T E R A S M A O G I F
 H A R R R N C T L O O R C C
 S O B A A A O B O N B Y Y Y
 K B C M L M R G D R R I C C
 C S K A T E B O A R D T L L
 I A T E L B L U E W F N E E
 R O J L L A L F S A P I H S
 R M O P E D A I R P L A N E
 L R E T O O C S M H O R S E
 E T U H C A R A P P O T O M

AIRPLANE
 BICYCLE
 BLIMP
 BOAT
 CAMEL
 CANOE
 CARRIAGE
 ELEVATOR
 ESCALATOR
 FERRY
 GONDOLA

HORSE
 JET
 MOPED
 MOTORCYCLE
 PARACHUTE
 RAFT
 RICKSHAW
 ROCKET
 ROLLER BLADES
 SCOOTER
 SHIP

SKATEBOARD
 SKIS
 SLED
 SNOWMOBILE
 SUBMARINE
 TRAIN
 TRAM
 TRUCK
 VAN
 WAGON
 YACHT

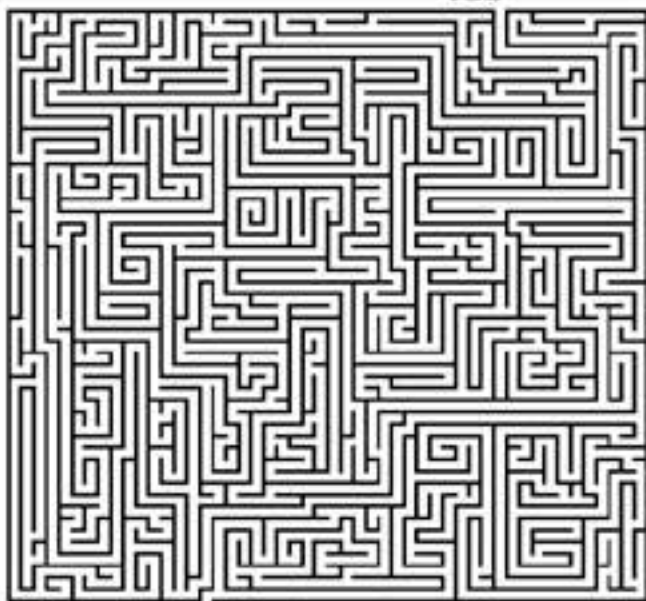
SUDOKU

	7			4		8	9
6		9		8			
2			5	7	6	4	
9		1		3		6	
		8	4	9	2		
	5		2			1	3
	1	7	8	6			4
			3			5	2
4	3		7				1

MAZE

Valentine Monster Maze

Help elephant find his Valentine by following through the maze.



© kidscanhoviefun.com



FIND - A - WORD

PARTY TIME

I N E N G L P R E S E N T S A
 I C E C R E A M N D W H E G N
 N Y O U I R E A C H E I P A G
 V H T Y B H S N O O L L A B N
 I I N E B S A T Y O R O R T N
 T D E C O R A T I O N S T F E
 A H U N N E S D S R G E Y I D
 T Y S E S K A R R U S O F G F
 I A E G E A Y O E S D R A C F
 O U L G A M E S R M H E V C R
 N E D I V E T I E A A N O T I
 S E N C L S E N G R P E U A E
 W R A P P I N G P A P E R F N
 M K C F R O O M T H Y E S T D
 E Q U E E N N L O O T B A G S

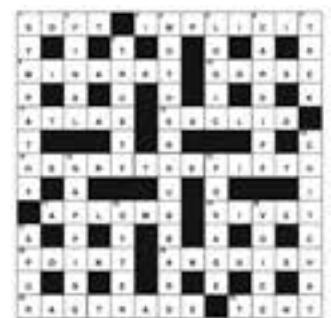
- | | | | |
|-------------|-----------|--------------|-----------|
| BALLOONS | FUN | ICE CREAM | PRESENTS |
| CAKE | GAMES | INVITATIONS | RIBBONS |
| CANDLES | GIFT BAGS | LOOT BAGS | SING |
| CARDS | GUESTS | NOISE MAKERS | STREAMERS |
| DECORATIONS | HAPPY | PARTY | WRAPPING |
| FRIENDS | HATS | FAVOURS | PAPER |

ANSWERS

SUDOKU

1	7	5	6	2	4	3	8	9
6	4	9	1	3	8	7	2	5
3	8	3	9	5	7	6	4	1
9	2	1	5	7	9	4	6	8
3	6	8	4	1	9	2	5	7
7	5	4	2	8	4	3	0	3
5	1	7	8	6	2	0	3	4
8	5	6	3	4	1	5	7	2
4	3	2	7	1	5	0	5	6

CROSSWORD



Sharp Airlines Office Hours

Sharp Airlines have new office hours

Monday to Friday - 8am to 6pm EST

Saturday - Closed

Sunday - 1pm to 6pm EST

Public Holidays - 10am to 5pm EST

CLOSED - Good Friday and Christmas Day

Please note these schedules are subject to change without notice please visit sharplines.com.au for the latest information.

Please refer to sharplines.com.au for flight availability on public holidays*

Phone: 1300 55 66 94

Melbourne Flight Schedules

From 1st February to 31st May 2013

Melbourne (Essendon) to Hamilton					
Essendon - Hamilton	Departure time	Arrival Time	Flight No.	Frequency	No. Stops
	0820	0910	SHARP822	M T W T F . .	NON STOP
	1120	1210	SHARP834 Sa .	NON STOP
	1650	1740	SHARP842 Su	NON STOP
	1755	1845	SHARP828	M . W . F . .	NON STOP
	1910	2000	SHARP828	. T . T . . .	NON STOP
Hamilton - Essendon	Departure time	Arrival Time	Flight No.	Frequency	No. Stops
	0705	0750	SHARP821	M T W T F . .	NON STOP
	1005	1050	SHARP833 Sa .	NON STOP
	1535	1620	SHARP841 Su	NON STOP
	1640	1725	SHARP827	M . W . F . .	NON STOP
	1755	1840	SHARP827	. T . T . . .	NON STOP

Melbourne (Essendon) to Portland					
Melbourne (Essendon) to Portland	Departure time	Arrival Time	Flight No.	Frequency	No. Stops
	0820	0945	SHARP822	M T W T F . .	1 STOP HML
	1120	1245	SHARP834 Sa .	1 STOP HML
	1650	1815	SHARP842 Su	1 STOP HML
	1755	1920	SHARP828	M . W . F . .	1 STOP HML
	1910	2035	SHARP828	. T . T . . .	1 STOP HML
Portland to Melbourne (Essendon)	Departure time	Arrival Time	Flight No.	Frequency	No. Stops
	0630	0750	SHARP821	M T W T F . .	1 STOP HML
	0930	1050	SHARP833 Sa .	1 STOP HML
	1500	1620	SHARP841 Su	1 STOP HML
	1605	1725	SHARP827	M . W . F . .	1 STOP HML
	1720	1840	SHARP827	. T . T . . .	1 STOP HML

Adelaide Flight Schedules

From 2nd February to 31st May 2013

Adelaide to Port Augusta					
Adelaide – Port Augusta	Departure time	Arrival Time	Flight No.	Frequency	No. Stops
	0645	0735	SHARP861	M T W T F . .	NON-STOP
	1715	1805	SHARP867	M T W T F . .	NON-STOP
Port Augusta - Adelaide	Departure time	Arrival Time	Flight No.	Frequency	No. Stops
	0750	0840	SHARP862	M T W T F . .	NON-STOP
	1820	1910	SHARP868	M T W T F . .	NON-STOP

Flinders Island Flight Schedules

From 12th April – 25th June 2013

Flinders - Launceston					
Flinders Island - Launceston	Departure time	Arrival Time	Flight No.	Frequency	No. Stops
	0855	0930	SHARP802	M T W T F Sa .	NON-STOP
	1455	1530	SHARP806	M . W . F . .	NON-STOP
	1655	1730	SHARP808	M T W T F . .	NON-STOP
	1655	1730	SHARP814Su	NON-STOP
Launceston to Flinders Island	Departure time	Arrival Time	Flight No.	Frequency	No. Stops
	0800	0835	SHARP801	M T W T F Sa .	NON-STOP
	1000	1035	SHARP803	M . W . F . .	NON-STOP
	1600	1635	SHARP807	M T W T F . .	NON-STOP
	1600	1635	SHARP811Su	NON-STOP

Flinders Island to Melbourne (Essendon)					
Flinders Island – Essendon	Departure time	Arrival Time	Flight No.	Frequency	No. Stops
	1055	1200	SHARP804	M . W . F . .	NON-STOP
Essendon to Flinders Island	Departure time	Arrival Time	Flight No.	Frequency	No. Stops
	1330	1435	SHARP805	M . W . F . .	NON-STOP

King Island Flight Schedules

Effective 1st February 2013

Burnie (Wynyard) – King Island – Burnie (Wynyard)					
Burnie – King Island	Departure time	Arrival Time	Flight No.	Frequency	No. Stops
	0755	0835	SHARP892	M T W T F . .	NON-STOP
	1045	1125	SHARP896 Sa .	NON-STOP
	1605	1645	SHARP894	M T W T F . Su	NON-STOP
King Island - Burnie	Departure time	Arrival Time	Flight No.	Frequency	No. Stops
	0855	0935	SHARP893	M T W T F . .	NON-STOP
	1145	1225	SHARP897 Sa .	NON-STOP
	1705	1745	SHARP895	M T W T F . Su	NON-STOP

Launceston – King Island - Launceston					
Launceston – King Island	Departure time	Arrival Time	Flight No.	Frequency	No. Stops
	0710	0835	SHARP892	M T W T F . .	ONE STOP
	1000	1125	SHARP896 Sa .	ONE STOP
	1520	1645	SHARP894	M . W . F . Su	ONE STOP
King Island - Launceston	Departure time	Arrival Time	Flight No.	Frequency	No. Stops
	0855	1020	SHARP893	M . W . F . .	ONE STOP
	1145	1310	SHARP897 Sa .	ONE STOP
	1705	1830	SHARP895	M T W T F . Su	ONE STOP

Note: Please refer to our website www.sharplines.com.au for flight availability on public holidays

Where we fly.



Book your Sharp Connection today!

1300 55 66 94 | sharpairlines.com.au



To increase your bottom line...

...just add

Pepper
brand managers.

pepperbrandmanagers.com

ANALYSE

CREATE

MANAGE



sharp airlines
www.sharpairlines.com

King Island - Bass Strait

For more info on King Island, please visit www.kingisland.org.au
For Reservations and Enquiries, please call Sharp Airlines
1300 556 694

Choose your
**perfect
escape**
with
Sharp Airlines

Bass Strait

At the Western entrance to Bass Strait lies a precious treasure known as King Island. An island both rich in history and landscape, Ship Wrecks, lighthouses, & jagged reefs contrast with long stretching sandy white beaches, lush green pastures and spectacular rocky cliffs. From our little paradise we produce some of Australia's finest natural foods for which we are probably best known, yet there is more to this 64km long by 27km wide stretch of land than first meets the eye. Come join us and experience what we call the 'King Island Way' of life.



Things to do while you're here

Arts and crafts to view or purchase at the King Island Cultural Centre, Port Side Gallery and Red Hut Complexions, Activities and Tours of beaches, lagoons, fishing for sweep, salmon gummy and school sharks, diving with 100 known shipwrecks, rock lobsters and abalone (licences required). Surfing 5 different beaches, or if you're into bird watching, penguin sight-seeing or horse trails, golf, sailing or hunting King Island has all these attractions.

Nights	Ex-Launceston	Ex-Wynyard
2	From \$623	From \$503
3	From \$748	From \$628
5	From \$998	From \$878

visit www.sharpairlines.com.au

AVIS FOR GREAT RATES

PLUS



At Avis we are proud of our service – but we also have great rates and Qantas Frequent Flyer Points.* For great Avis deals, visit our website and sign up now.

Go to the Avis counter on arrival.



*You must be a member of the Qantas Frequent Flyer program to earn points. Membership and points are subject to the terms and conditions of the Qantas Frequent Flyer program. A joining fee may apply. For more information about earning points with Avis visit qantas.com/cars