

# sharp

TRAVELLER

ACTIVITIES / DESTINATIONS / EVENTS



**TASSIE  
NATURE EVENTS**

**KING ISLAND  
FISHING**

**ETHICAL  
SHOPPING TOURS**

Edition  
**42**  
Winter  
2022



**FLINDERS  
COUNCIL**



# COMMUNITY INFORMATION APP



SCAN ME

Flinders Island has a range of programs, activities and events throughout the year. Visit the Community Calendar to see what's on now and what's coming up. Contact details for all our community groups.

<https://flindersisland.app>



## RESERVATIONS & ENQUIRIES

**CALL  
1300 55 66 94**

[sharpairlines.com.au](http://sharpairlines.com.au)

## HEAD OFFICE

44 Gray Street  
Hamilton Victoria 3300  
T: 1300 55 66 94  
E: [reservations@sharpairlines.com.au](mailto:reservations@sharpairlines.com.au)

## LIKE TO ADVERTISE?

Editorial & Advertising  
Contact Heidi Jarvis  
T: 0438 778 161  
E: [heidi@organisedsuccess.com](mailto:heidi@organisedsuccess.com)

## WELCOME!

In the last edition of Sharp Traveller I indicated that for every passenger that booked with Sharp Airlines for travel in June we would donate \$5 to the Red Cross Appeal for those effected by the New South Wales and Queensland Floods.

I am delighted to inform you that we have raised \$5,160 for the appeal and those proceeds have been donated to the Appeal.

Sharp Airlines have always recognised that in every community there are formal and informal groups in need of support, funding or sponsorship that assists essential services for the wellbeing of the community.

In the isolated communities of King and Flinders Islands in particular community groups are often the fabric that holds these small communities together

Our Community Support Program assists those groups, applications are assessed on their merit and the overall benefits to the community to achieve tangible benefits.

To access an application form visit our website or email [community@sharpairlines.com.au](mailto:community@sharpairlines.com.au)

Another major sector of our business is the provision of charter flights all over Australia.

We offer a personalised charter service no matter how long or short the journey for groups, business and holiday makers.

Our clients include tourists on an individual and group basis as well as the corporate, business and government. We are a leader in the Fly-In Fly-Out (FIFO) sector providing aviation solutions to the resource industry across Australia.

For more information visit our website or contact our Reservation team on **1300 55 66 94**.

Thank you for flying with us.



**Malcolm Sharp**  
Managing Director

## In This Edition



**4** THE MAN WITH THE HALF CENTURY WINGSPAN



**16** ANNUAL AgriCULTURAL FESTIVAL



**32** POSTCARDS PLUS EXHIBITION



**20** PILOT PROGRAM



**34** RED DECKER



**10** THE PICASSO CENTURY NGV INTERNATIONAL



**24** NO ORDINARY SHOPPING TOUR!



**38** FLINDERS ISLAND SPORTS & RSL CLUB



WHERE TO GO FISHING ON KING ISLAND

**28**



**14** TASSIE TRADE NATURE EVENTS



**30**

FISHING AROUND KING ISLAND



**42** MALTHOUSE THEATRE 2022 SEASON

FLINDERS ISLAND  
AIRPORT

THE MAN WITH

# *The Hatt Century* WINGSPAN



The story of Bass Strait is as epic as the people who reside there. About 40 million years ago the sea first rolled across the land, before time gave way to a series of ice ages. There have been periods where the Strait became dry land and people, plants and animals moved freely between Victoria and Tasmania. The last ice age ended approximately 15 000 years ago, and not long after, Tasmania finally was separated by the waterway we know today.

Contributed by [The Tasmanian Tuxedo](#)

Credit: The Tasmanian Tuxedo

In far more recent times, flight has emerged as an important backdrop to the Flinders Island story.

Isolated by the tumultuous seas that endlessly lash its granite core, the population turned to aviation almost 100 years ago to support their wild and untamed lifestyle. Small and reliable aircraft have quickly become a mainstay of life in Bass Strait.

Noel Bowland has witnessed first-hand the last 51 years of this remarkable journey. "Ansett approached me as a 15 year old when I was in Year 10," begins Noel, gazing out over the tarmac and casting his mind back to how his remarkable service began. "I guess they asked the headmaster at the local school if there was anyone there that might be suited to the role. I grabbed the opportunity and the next thing I knew I was on a flight to Launceston for training. I certainly didn't think it was the start of over 50 years in the job."

The course of next five decades saw Noel work for multiple airline companies serving the largest island in the Furneaux Group. Ansett, Executive Airlines, HC Sleigh Aviation, Airlines of Tasmania...the list paints a picture of Tasmania's regional aviation history. "Over the years, different operators have vied for the Flinders routes, all bringing slightly different approaches to the challenges we face here," reflects Noel. "For example, trying different routes or changing the frequency of their services. Variations in freight versus passenger runs too. Government subsidies have played a big role in success over the years, as has the fluctuating population of the island."

For the past 11 years Noel has lent his experience to Sharp Airlines, continuing to serve as the Flinders Island Base Manager. "Sharp started service here in 2010," nods Noel. "They operate a very stable service. It's key to bringing in lots of essential items to the island...fruit and veg, bakery products, Toll and TNT freight. We deliver all that from here too."

The small but efficient team at Flinders are multiskilled. "The four of us do everything here," continues Noel. "From passenger reservations and check-ins through to ground handling and freight deliveries. At larger airports there are crews dedicated to certain roles, but out here it's all about variety...we do a bit of everything. Noel pauses before adding, "It's nice to have the ongoing connection with the community too. The locals like to call us direct and book their trips and they're often dropping in to pick up their parcels." A cheeky grin creeps over his face, "Of course, there's always some tongue-in-cheek banter going on. It's just how things have always been done here."

Noel's is symbolic of the greater Flinders attitude. He's all about community and playing his part to quietly get things done. He's a gentle soul focussed on the task at hand, friendly service, safety and efficiency. Nothing is too much trouble.

Flinders Island Airport sits on an open expanse of flat land sandwiched between the ocean and the striking mountain range that forms the backbone of the island. Slammed by ferocious westerlies, the typography funnels the wind across



the tarmac and up over the hillsides beyond. Low growing coastal scrub shelters the eclectic collection of vehicles waiting patiently in the carpark for their owners to return. Dusty utes and four wheel drives provide an interesting commentary on island life. On a calm day the only sound is the veritable birdsong chorus – this is their territory. If the winds are up though, one is quick to take shelter in the low slung building that services the airport's arrival and departure needs.

One would think the wild weather would dictate the Flinders flight schedule. "But it's not often that it happens," Noel says, with a shake of the head. "People forget that although the winds are up, the planes are usually travelling at a far greater speed anyway. There could be 40 knots of wind but the plane's doing 180 anyway. At the end of the day wind never causes us too many issues, maybe just a bit of turbulence over the mountains every so often." Laughing he adds, "Back in the old days the sick bags got plenty of use in the Ansett Fokker Friendships. But these Fairchild Metro 23's Sharp have today are very good."

However there are instances where Mother Nature throws down unexpected challenges. "I do recall one time when we were shut down for three days though and that was due to sea fog," says Noel. "It had rolled right in off the ocean and the visibility was next to nothing. That's one event that can halt operations pretty quickly."

Like many locals today, Noel's family is inextricably linked to life in Bass Strait. "My grandfather was born in Tasmania," he starts. "But after his parents died when he was a young boy, he was taken in by a Christian mission church and placed with a family on East Kangaroo Island. That family tragically had three



Credit: The Tasmanian Tuxedo



sons drown in a boating mishap, and they went on to adopt three boys who were in desperate need of homes. In the early 1900s, he met my grandmother. She worked in the general store that serviced the whole of the Furneaux Group at the time."

Noel's own father came to the island during World War 2 working with the RAAF base. "Mum was a local girl of course," he nods. "That whole period – after the war and throughout the soldier settlement scheme – saw Flinders really boom. It was a defining point in the island's history," says Noel. "Lots of families arrived, farming was huge and so was the fishing industry."

"I remember vividly that we'd often have trucks lined up outside here," says Noel, motioning to the road leading up to the airport carpark. "And before long we'd have three large aircraft choc-a-bloc full of crays," reflects Noel. "Each one would have about 200 bags of crayfish on board. Back then there were around 30 crayboats on the island, compared to just one now. It's an industry that's changed a lot."

In recent years, tourism has emerged as the focus for the Flinders Island community. "There's a lot starting to happen here on Flinders," agrees Noel. "New businesses springing up, and with that comes young families. It's great to see the school growing in numbers once again." And then, "The locals are very encouraging of new businesses that are emerging, just as long as they're done sustainably and well. I think we all know that tourism is key to the island's future."

"Growing up here was just fantastic," explains Noel. "Things were really social and there was always a party in a woolshed happening or a few beers to be had down on the beach. It's certainly been a great place to raise our daughters too and I think it shaped them into being friendly, genuine people with a sense of community spirit. These days I think young people are more online and we've lost that a bit. I'd really like to see them out and about a bit more – what we have here is just too good not to be enjoying."

With over five decades of service to the community under his belt, Noel is a mainstay of airport life. He's seen it all and is happy to share his stories. "One of the funny things I recall harks back to when one of the airlines were operating De-Havilland aircraft. These had a rear passenger entrance door," describes Noel. "The captain had started the aircraft engines while the 1st officer was completing a passenger briefing in the rear of the cabin. Upon realising that he had forgotten to remove the tailstand from the aircraft, he jumped out and as he did so the captain took off – not realising the 1st officer was not in the aircraft. The plane was taxiing down the runway at some speed."

"All I could do was watch in hysterics as the poor first officer took off at full stride with the speed that any 100m Olympic athlete would be proud of. He finally caught up with departing

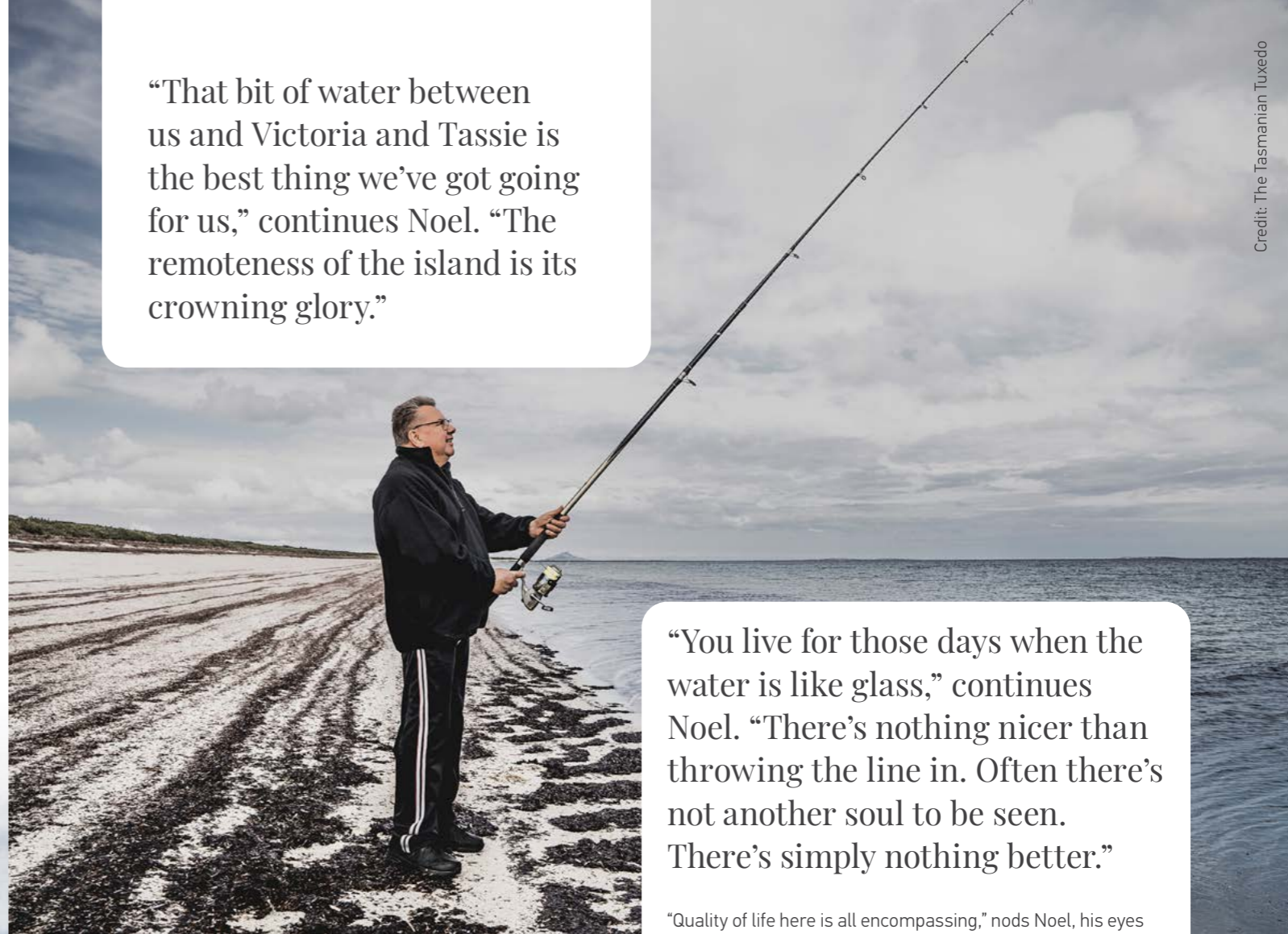
aircraft and with the dexterity of a high jumper, leapt back on board." Noel pauses before adding, "The aircraft continued on and departed as if nothing had happened. God only knows what the passengers were thinking."

Reflecting on more recent times, Noel explains, "Our Tasmanian services have been busier since COVID with Tasmanians increasingly being unable to holiday on the mainland. That's seen more locals taking the opportunity to holiday here on Flinders. In the past 18 months Sharp added three direct flights to and from Hobart three days a week," explains Noel. "That's been really well received. Having more Tasmanians over here lately has been great and has supported our local business community."

"I can easily pick the Tasmanians from the Victorians," he jokes. "They tend to be a lot more relaxed and they easily fit in. We appreciate people that just want to enjoy the place for what it is and not try and change things too much. We love it just how it is."



"That bit of water between us and Victoria and Tassie is the best thing we've got going for us," continues Noel. "The remoteness of the island is its crowning glory."



"You live for those days when the water is like glass," continues Noel. "There's nothing nicer than throwing the line in. Often there's not another soul to be seen. There's simply nothing better."

"Quality of life here is all encompassing," nods Noel, his eyes wandering out to the mountains beyond. "It's easy to take all this for granted, the secluded bays and pristine beaches, so sometimes I have to remind myself how good I have it. It's not cheap to live here, but weighing it all up, I wouldn't have it any other way."

Living just around the back of the airport, Noel's always at hand if needed. A trip to the beach is always on the cards and Basil the Labrador doesn't need reminding to take his place in the back of the ute. "There's no need to ask him twice," remarks Noel. "He loves going out."

"People often don't realise that Flinders was settled before Hobart," says Noel, before adding with a keen glint in his eye, "I joke often that if Tasmania is like a good wine, then Flinders is a fine port – so much stronger."

If you're passing through Flinders airport and Noel's shock of silver hair catches your eye, be sure to give him a wave. You'll be rewarded with a warm smile and the knowledge that you're in very safe hands.

"Sharp are now the largest metro operator in Australia," explains Noel. "The last decade has been fantastic and I've been lucky enough to meet some great people. It's nice that we all get together once a year too. The annual Sharp Christmas party usually sees everyone fly in and spend time catching up. To have that opportunity to put a face to the voice you speak to on the phone every week is really good."

Speaking from his vast experience in regional aviation, Noel is quick to point to the challenges for airline operators. "With smaller airports like this one, there are always things like landing fees and passenger taxes to consider. It costs a lot to maintain an airport and most people just don't think of everything that the airline has to build in to the price of the ticket. It might cost a little more to come to Flinders than other locations, but I'd say it's well worth it. In some ways it protects the island too."

Noel's down time is spent doing what most islanders love most – fishing, boating and time with family. "Yeah, we load up the ute with the barbeque, the fishing gear and the dog...that's our life really. It's what I love the most about Flinders. You don't have to go far to find a magic spot. It's all right here on the doorstep. Often the young pilots will comment to me, 'You've got it made over here mate', and I can't do much but agree. We keep things quiet and simple on the island."



**Pablo Picasso** Figures by the sea (Figures au bord de la mer) 12 January 1931 | oil on canvas 130.0 x 195.0 cm | Musée national Picasso-Paris | Donated in lieu of tax, 1979 (MP131) | © Succession Picasso/Copyright Agency, 2022. | Photo: © RMN - Grand Palais - Mathieu Rabeau

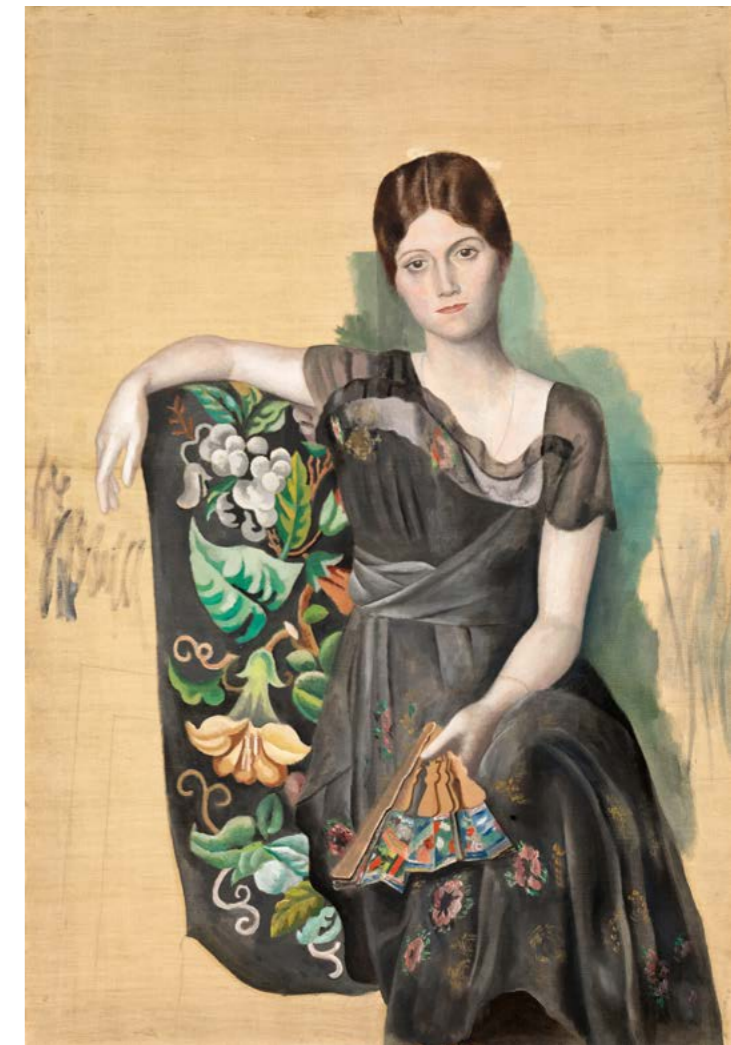


**Pablo Picasso**  
*Woman in an armchair (Femme dans un fauteuil)* summer 1927  
 oil on canvas  
 130.0 x 97.0 cm  
 Musée national Picasso-Paris  
 Donated in lieu of tax, 1979 (MP99)  
 © Succession Picasso/Copyright Agency, 2022.  
 Photo: © RMNGrand Palais (Musée national Picasso-Paris)/Adrien Didierjean

Curated by noted scholar of 20th century painting Didier Ottinger, Deputy Director of the Musée national d'art moderne, Centre Pompidou, Paris, The Picasso Century examines the diverse influences, encounters and collaborative relationships that steered Picasso through many distinct artistic periods, such as his Blue Period, Cubism and Surrealism, and draws lines between Picasso's famous creations and the world around him.

By exploring Picasso's career through his personal, artistic and intellectual engagement with his peers, the exhibition provides a unique insight into the artistic legacy of one of the 20th century's most influential and celebrated artists, as well as the community of artists from which he emerged.

Victoria's Minister for Creative Industries Danny Pearson said: 'The Picasso Century brings together master works from across Picasso's career, alongside those from other leading artists and innovators of the time. This worldpremiere Melbourne Winter Masterpieces exhibition will be an absolute



**Pablo Picasso**  
*Portrait of Olga in an armchair (Portrait d'Olga dans un fauteuil)* spring 1918  
 oil on canvas  
 130.0 x 88.8 cm  
 Musée national Picasso-Paris  
 Donated in lieu of tax, 1979 (MP55)  
 © Succession Picasso/Copyright Agency, 2022.  
 Photo: © RMN-Grand Palais (Musée national Picasso-Paris)/Mathieu Rabeau

## MELBOURNE WINTER MASTERPIECES EXHIBITION 2022

# The Picasso Century

NGV INTERNATIONAL

Melbourne Winter Masterpieces exhibition 2022: The Picasso Century NGV International  
 Until 9 September 2022 | Admission fees apply

The world-premiere Melbourne Winter Masterpieces exhibition, The Picasso Century, charts the extraordinary career of Pablo Picasso in dialogue with the many artists, poets and intellectuals with whom he intercepted and interacted throughout the 20th century, including Guillaume Apollinaire, Georges Braque, Salvador Dalí, Alberto Giacometti, Françoise Gilot, Valentine Hugo, Marie Laurencin, Dora Maar, André Masson, Henri Matisse, Dorothea Tanning and Gertrude Stein.

Exclusively developed for the NGV by the Centre Pompidou and the Musée national Picasso-Paris, the exhibition features over 70 works by Picasso alongside over 100 works by more than 60 of his contemporaries, drawn from French national collections, as well as the NGV Collection. Audiences will also have the opportunity to discover a rich selection of works by artists rarely exhibited in Australia, including Natalia Goncharova, Julio González, Wifredo Lam, Suzanne Valadon and Maria Helena Vieira da Silva.



**Pablo Picasso**  
*Portrait of a woman (Portrait de femme)* 1938  
 oil on canvas  
 98.0 x 77.5 cm  
 Centre Pompidou, Paris,  
 Musée national d'art moderne-Centre de création industrielle  
 Gift of the artist, 1947 (AM 2729 P)  
 © Succession Picasso/Copyright Agency, 2022.  
 Photo: © Centre Pompidou, MNAM-CCI/Georges Meguerditchian/Dist. RMN-GP

treat for art lovers from across Victoria and beyond, and a massive drawcard to our creative state this winter.'

Laurent Le Bon, President, Centre Pompidou, said 'Picasso reunited at last with Australia and his fellow accomplices and travellers. I am delighted with this collaboration between two French institutions and the National Gallery of Victoria: this exceptional partnership will allow the Australian public to discover Picasso's paintings, sculptures, drawings, ceramics, and the works of the artists with whom he never ceased to interact. I wish to extend a warm thank you to all those who have made this magnificent project possible.'

Cécile Debray, President, Musée national Picasso-Paris, said: 'The Picasso Century offers an original, broad approach that allows us to grasp the artist's career in his artistic and cultural context, from his formative years to his posterity. It thus offers an astonishing journey through the Parisian and cosmopolitan art scene of the 20th century. A Picasso, no longer a genius "ex-nihilo" but an artist in the world, with his friendships with poets, cubists, surrealists, his political commitments, his love affairs with artists, his circles of disciples and admirers.'

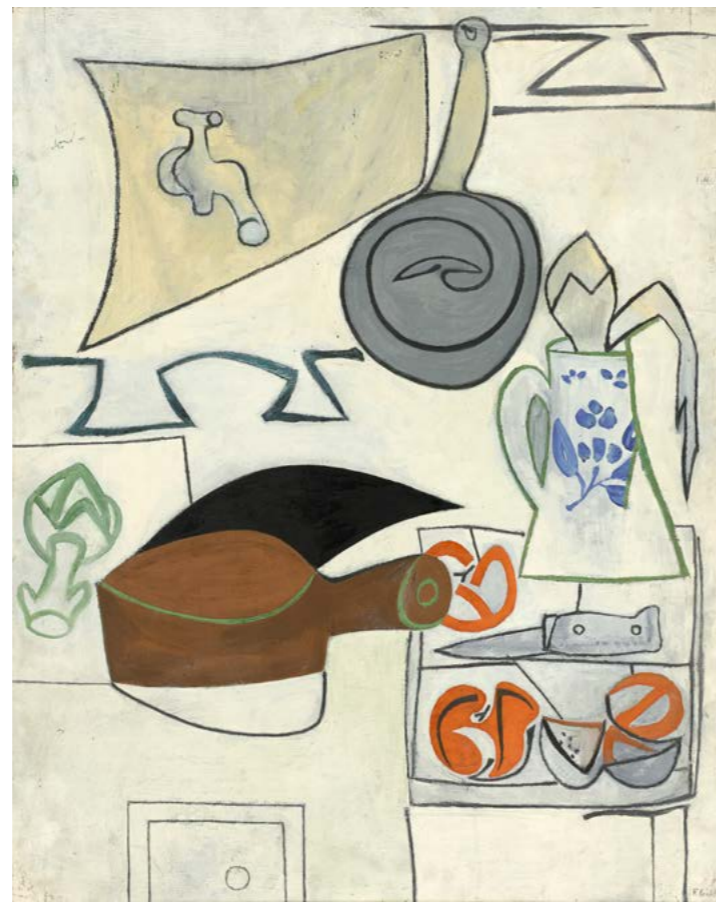
'I am delighted by this partnership with the National Gallery of Victoria in Melbourne, which testifies to the ties of friendship

and proximity between France and Australia, but also that the French museums participating in this major exhibition have the opportunity to be ambassadors of French heritage and of a historic artistic scene that was the foundation of Western modernity.'

Tony Ellwood AM, Director, NGV, said: 'This exhibition offers visitors an extraordinary insight into the development of modern art and the preeminent figure at its centre, Pablo Picasso. Through more than 170 works of art – including many that have never been seen in Australia – audiences will come to appreciate the many ways in which Picasso influenced – and was influenced by – the artistic community that surrounded him.'

Fifteen thematic sections organise The Picasso Century, which trace the many distinct periods that shaped the artist's career over more than seven decades, while also situating his work within a broader artistic and geographical context.

Each exhibition section provides a nuanced perspective on a rich century of artistic experiment, in which Picasso stands prominently among many innovators.



**Françoise Gilot**  
*Sink and tomatoes (Evier et tomates)* May 1951  
 oil on plywood  
 91.8 x 72.8 cm  
 Centre Pompidou, Paris,  
 Musée national d'art moderne-Centre de création industrielle  
 Purchase, 1952 (AM 3228 P)  
 © Françoise Gilot  
 Photo © Centre Pompidou, MNAM-CCI/Bertrand Prévost/Dist. RMN-GP



**Salvador Dalí**  
*Invisible sleeping woman, horse, lion (Dormeuse, cheval, lion invisibles)* 1930  
 oil on canvas  
 50.2 x 65.2 cm  
 Centre Pompidou, Paris,  
 Musée national d'art moderne-Centre de création industrielle  
 Gift of the Association Bourdon, 1993 (AM 1993-26)  
 © Salvador Dalí, Fundació Gala-Salvador Dalí/VEGAP. Copyright Agency, 2022.  
 Photo: © Centre Pompidou, MNAM-CCI/Philippe Migeat/Dist. RMN-GP

The beginning of the exhibition explores Picasso's formative years, which encapsulate significant artistic developments, most notably Cubism, the development of which Picasso led with Georges Braque. Considered by many the 'experiment' that most radically transformed 20th century art, Cubism saw Western art move away from representing likeness and, among many innovations, introduced multiple and simultaneous perspectives into a composition, resulting in the style's recognisable fragmented imagery.

The Picasso Century also examines Picasso's place within the multicultural crucible that was interwar Paris, and his interaction with other artists and intellectuals including André Breton, Georges Bataille, Aimé Césaire, Alberto Giacometti and Gertrude Stein. The exhibition will be particularly rich with works from Picasso's Surrealist period, presented alongside works by artists including Kay Sage, Max Ernst, Salvador Dalí, Giorgio de Chirico and André Masson.

The final sections of the exhibition explore Picasso's work in an increasingly international art world post-1945 and examines the contested artistic output towards the end of his career. His work of the 1950s and 1960s are positioned alongside later generations of painters, including Francis Bacon and Willem de Kooning.

The inevitable question of Picasso's legacy in the 21st century will be posed through the inclusion of the 2009 video work *I see a woman crying (Weeping Woman)*, Tate Liverpool by Rineke Dijkstra. This engaging contemporary work invites reflection on Picasso's position as a point of reference for all who seek to understand the history of 20th century art.



**Pablo Picasso**  
*The matador (Le Matador)* 4 October 1970  
 oil on canvas  
 145.0 x 114.0 cm  
 Musée national Picasso-Paris  
 Donated in lieu of tax, 1979 (MP223)  
 © Succession Picasso/Copyright Agency, 2022.  
 Photo © RMN - Grand Palais - Mathieu Rabeau

Coinciding with The Picasso Century will be a free NGV Kids exhibition titled *Making Art: Imagine everything is real* featuring a range of hands-on activities and multimedia experiences inspired by methods of working invented by some of the leading European artists included in the Melbourne Winter Masterpieces exhibition. While learning about some of the leading artists of the twentieth century in Europe, children will make their own surprising works as they explore collage techniques, write poetry and play surrealist games and turn everyday materials into large-scale sculptures.

The Picasso Century will be on display from 10 June 2022 at NGV International, St Kilda Road, Melbourne.

For tickets and information,  
 please visit - [ngv.vic.gov.au](http://ngv.vic.gov.au)



# TASSIE Nature EVENTS

## BABY TASMANIAN DEVILS, EASTERN QUOLLS, SPOTTED-TAILED QUOLLS AND PLATYPUS

**When:** Sep - Nov  
**Where:** Across the state

The Tasmanian devil is the world's largest surviving carnivorous marsupial. Despite the decline in numbers since the early 1990s, populations of Tasmanian devils remain widespread in Tasmania from the coast to the mountains. They live in coastal heath, open dry sclerophyll forest, and mixed sclerophyll-rainforest.

The spotted-tailed quoll (or tiger cat as it was once inappropriately known) is the second largest of the world's surviving carnivorous marsupials. Spotted-tailed quolls are most common in cool temperate rainforest, wet sclerophyll forest and coastal scrub along the north and west coasts of the state.

Eastern quolls once occurred on mainland Australia, with the last sighting occurring in the Sydney suburb of Vacluse in the early 1960s. They are now considered extinct on the mainland. Eastern quolls are common in Mt Field National Park and elsewhere across the state.



The platypus and echidna are the only egg-laying mammals to be found on earth. Platypus are readily identified by their streamlined body, webbed feet, broad tail and characteristic muzzle or bill which is rubbery and contains no true teeth. In Tasmania, platypus are widely spread across the state and are common in the lakes of the Central Highlands as well as the rivers and streams of the south, south-west and north-west coasts.

**Image:** *Tasmanian devil* - Bonorong Wildlife Park  
**Credit:** Rob Burnett



For more information visit :  
[discovertasmania.com.au](http://discovertasmania.com.au)

## MUTTON BIRDS RETURN FROM ALASKA

**When:** Sep - Oct  
**Where:** Bass Strait and south-east coast

The short tail shearwater (mutton bird) migrates from Tasmania to the Northern Hemisphere for the northern summer. Departing for Alaska in April-May, the birds return to their burrows in Tasmania in spring.

This is one of the few Australian native birds in which the chicks are commercially harvested for food and oil.

**Image:** *Flock of mutton birds*  
**Credit:** Marlene Lyell, courtesy Tasmanian Parks and Wildlife Service



## MUTTON BIRDS LEAVE

**When:** April - May  
**Where:** Bass Strait and south-east coast

The shearwater (mutton bird) is the most abundant Australian seabird. From September to April, around 23 million short-tailed shearwaters breed in about 285 colonies in south-eastern Australia. Eighteen million of these arrive in Tasmania each year.

There are at least 167 colonies in Tasmania and an estimated 11.4 million burrows. The young chicks hatch in January and rapidly put on weight before the departure of the parents in early April.

Two to three weeks after the parents have left, the young birds begin their migratory flight.

**Image credit:** Joe Shemesh

## SOUTHERN RIGHT AND HUMPBACK WHALES RETURN SOUTH

**When:** Sep - Dec  
**Where:** North and east coast especially Freycinet Peninsula

Southern right whales and Humpback whales are the most frequently spotted whales along Australia's coastline. Populations spend their summer months in Antarctica feeding and migrate north for warmer waters to breed. They return south again in spring. Humpback whales migrate around 5000 km on average, one of the longest migratory journeys of any mammal on Earth.

**Image:** *Humpback whale*  
**Credit:** Tasmanian Parks and Wildlife Service





# Annual

## agriCULTURED FESTIVAL

4 - 7 August 2022

Northern Tasmania combines agriculture and entertainment with live music, farm tours, exclusive dining experiences and engaging conversations at the annual agriCULTURED festival.

From the 4 - 7 August 2022, Launceston and the North of Tasmania will host the second agriCULTURED Festival, an event that celebrates the contribution of the agri-food sector to the culture, community, and economy of Tasmania.

Seeking to influence the trajectory of the Australian agri-food and tourism sectors, agriCULTURED brings together farming families (and their sheds), with chefs, artists, musicians, and composers to celebrate the passion that goes into producing, farming, and food provenance. It also provides a forum for industry to connect with professionals and industry leaders to challenge norms and the status quo of the agriculture industry.

Over 60 industry trailblazers will lead the conversation over the course of the festival, including landscape designer, author and TV Host, Costa Georgiadis; former chef and food critic turned producer, Matthew Evans; and Gardening Australia Presenter and author, Hannah Moloney.

Theresa Chapman, agriCULTURED chair, hopes the event facilitates innovation, cooperation, and quality assurance in the industry to build resilience and drive sustainable growth in the agriculture and tourism sectors.

"agriCULTURED features and celebrates the real heart of our food culture, which is the people," says Chapman.



'Australia has ambitious targets for agriculture and food as it heads towards 2030. With demand for innovation in sustainable practices continuing to grow, collaboration, innovation and the sharing of information will be essential in achieving our targets.

As the interest and understanding of provenance, with a focus on local, sustainable, seasonal produce increases, consumers are hungry for information on where their food comes from and how it was created.

This festival places consumers at the heart of an agricultural landscape, alongside the people and stories that define it. Whilst for industry, it provides a platform for voices across the whole spectrum of food systems in Tasmania - indigenous land managers, farmers, innovators, and inventors." She said.

With its recent accreditation as a UNESCO City of Gastronomy, Launceston and the north is a natural fit to host the cultural program that will be delivered on farms, in barns and sites across the region.

The four-day program includes dinners showcasing local producers, conversations on sustainability and growth of the agri-tourism industry, demonstrations on the art and science of fermenting, on-farm workshops, forums, installations, music, sound art and naturally, plenty of local food and beverages.



The program commences on Thursday 4th August with gardening workshops through the day and a meet the producer's dinner hosted by renowned Tasmanian Chef Massimo Mele at Grain of the Silos, in the evening. Showcasing Tasmania's bounty and the people who create it, Massimo, a prominent spokesperson in support of local, sustainable producers and practises, comments:

"Working with hyper local producers whom we know and have built relationships with is fundamental to the food philosophy at Grain. The quality of produce in northern Tasmania is some of the best in the country and having access to such exceptional local, seasonal ingredients is a luxury. We know our growers by name, we know and understand just what it takes to get the produce to our door, and we want to support them wherever possible. Events like agriCULTURED which open the door to the farms of our producers and growers are fundamental in ensuring consumers and other hospitality business understand and support the local agriculture industry." says Mele.

**Day Two** (Friday 5th) will facilitate a series of food and agriculture related workshops taking place across Launceston exploring four key pillars: Grow, Make, Plate and Share. Once the sun sets, The Launceston Night Market, Fire + Fog, will light up Civic Square with live music and entertainment, and stalls of local food and drink to provide nourishment for those venturing out after dark.



**Day Three** (Saturday 6th) will commence with popup Ferment Stations at the Launceston Harvest Market. A collaboration with Beaker Street Festival, FermentTasmania and UTAS, the five stations explore the art and science of fermenting with demonstrations and interpretive panels.

In the evening, Timbre and FermentTasmania will co-host a Fire + Ferment Dinner celebrating the tradition of creating food using the ancient tools of fire and fermentation.

Across both Saturday and Sunday afternoons, the sheds of local farming properties will come alive as the Tasmanian arts organisation Big hART present Acoustic Life of Farm Sheds. This series will be held concurrently with on-farm workshops and forums throughout the region across three iconic farms in the Meander Valley.

agriCULTURED  
is an event made  
possible through  
the funding of  
Events Tasmania.

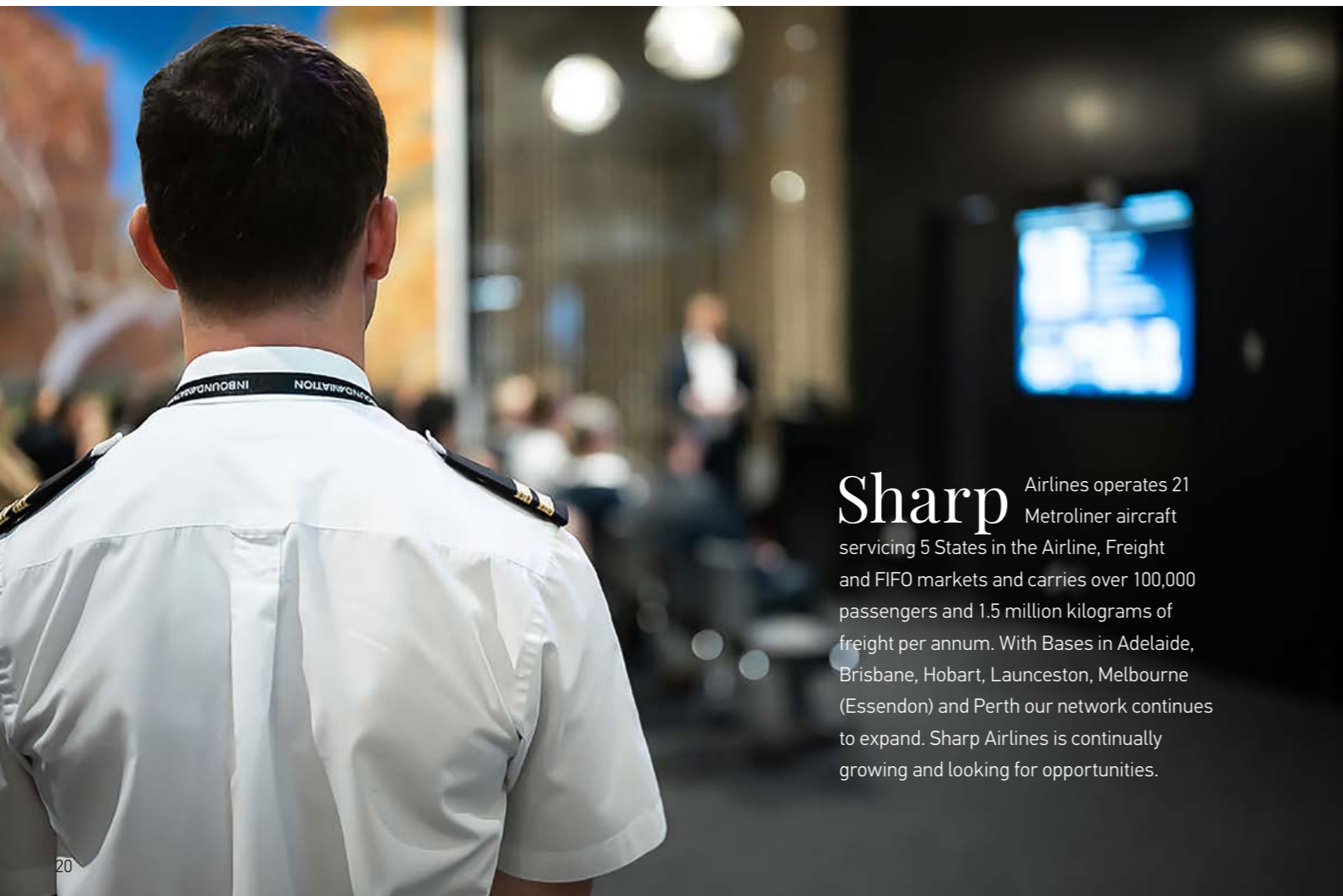
Ticket sales are available at  
[agricultured.com.au](http://agricultured.com.au)



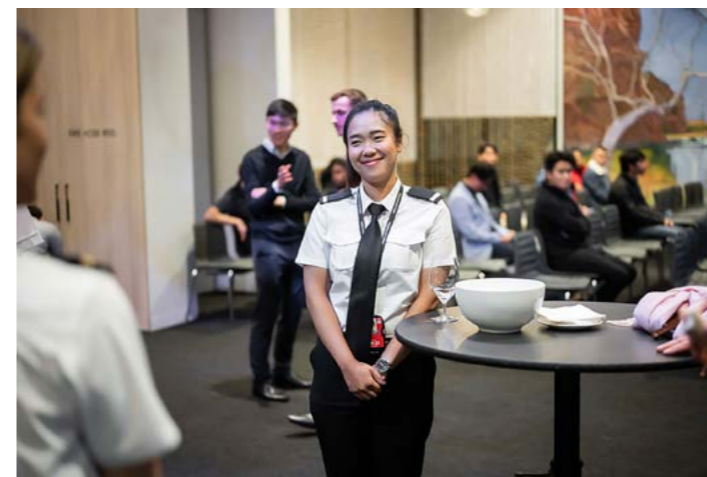
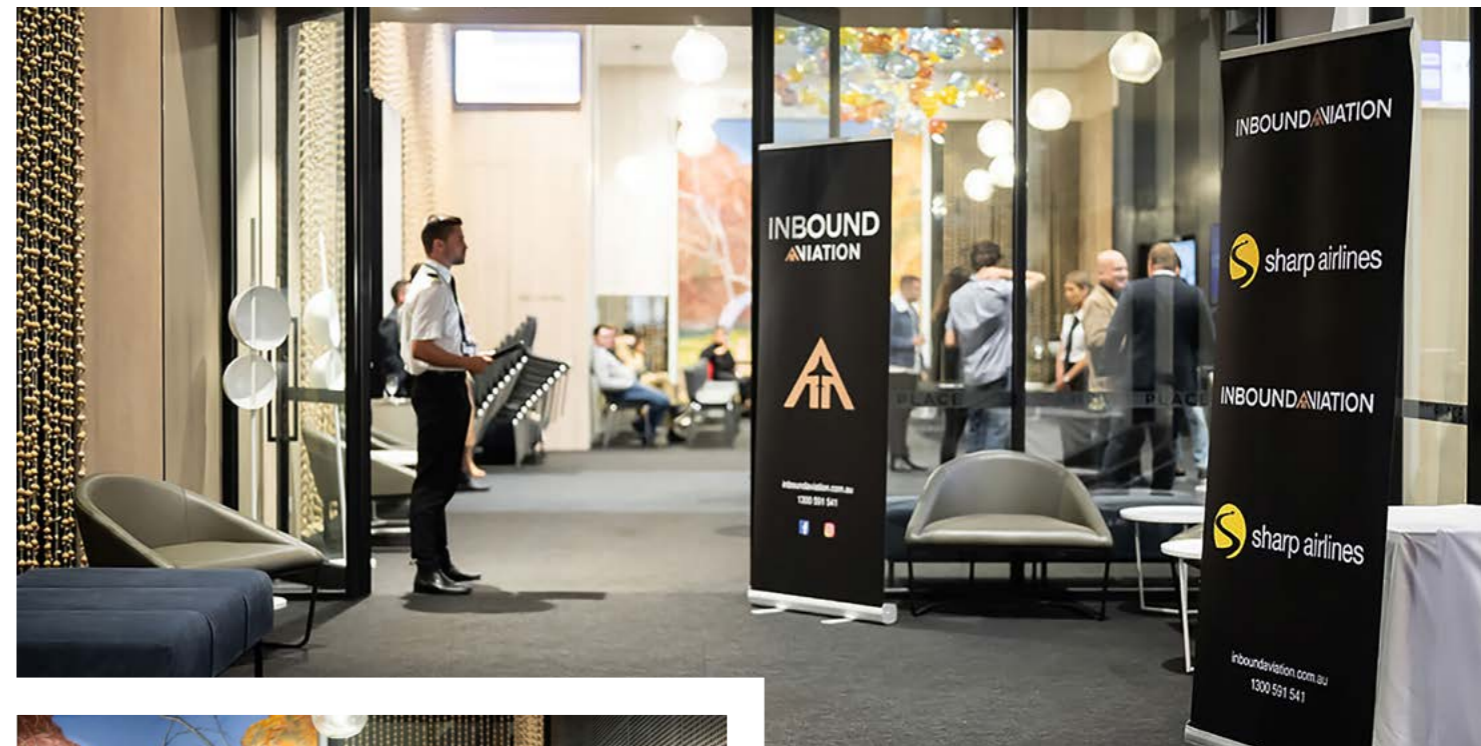
# Pilot PROGRAM

AUSTRALIA'S LONGEST SUCCESSFULLY RUNNING

Sharp Airlines & Inbound Aviation are pleased to announce that an in principal agreement for the continuation of Australia's longest successfully running cadetship, has been made.



**Sharp** Airlines operates 21 Metroliner aircraft servicing 5 States in the Airline, Freight and FIFO markets and carries over 100,000 passengers and 1.5 million kilograms of freight per annum. With Bases in Adelaide, Brisbane, Hobart, Launceston, Melbourne (Essendon) and Perth our network continues to expand. Sharp Airlines is continually growing and looking for opportunities.



Managing Director, Malcolm Sharp, "we look forward to working with Inbound Aviation and will oversee operations of the program at its Essendon Base in Victoria. Cadets will be exposed to Airline operations on a day-to-day basis which in the past has made our cadets stand out in the industry as multi-faceted and job ready.

Inbound Aviation's management team are highly experienced in airline operations and are accustomed to understanding the needs and expectations of regional operators.

Managing Director, Tom Gollan, "Inbound Aviation feels highly privileged to be entrusted with a prestigious training program such as the Sharp Airlines Cadetship. The environment in which the cadets will operate in, is arguably the most challenging and complex that Australia has to offer. With that in mind, it demands the highest standard of training possible". Inbound Aviation is excited to continue the Sharp legacy and deliver quality cadets to the Airline.



For more information visit : [inboundaviation.com.au](http://inboundaviation.com.au)

## ROCKJAW TOURS

FLINDERS ISLAND HUNTING + FISHING TOURS

**Chris (Rockjaw) Rhodes**  
M 0427 596 506

email [chris\\_rhodes@bigpond.com](mailto:chris_rhodes@bigpond.com) web [www.rockjawtours.com.au](http://www.rockjawtours.com.au)

sharp airlines

# AIR FREIGHT

- ✓ PICK UP AND DELIVERY
- ✓ GREAT FREIGHT RATES
- ✓ GUARANTEED SAFE DELIVERY
- ✓ FREIGHT EVERY FLIGHT, EVERY DAY

SHARP AIR FREIGHT - LAUNCESTON  
03 6391 8954 | 1300 556 694

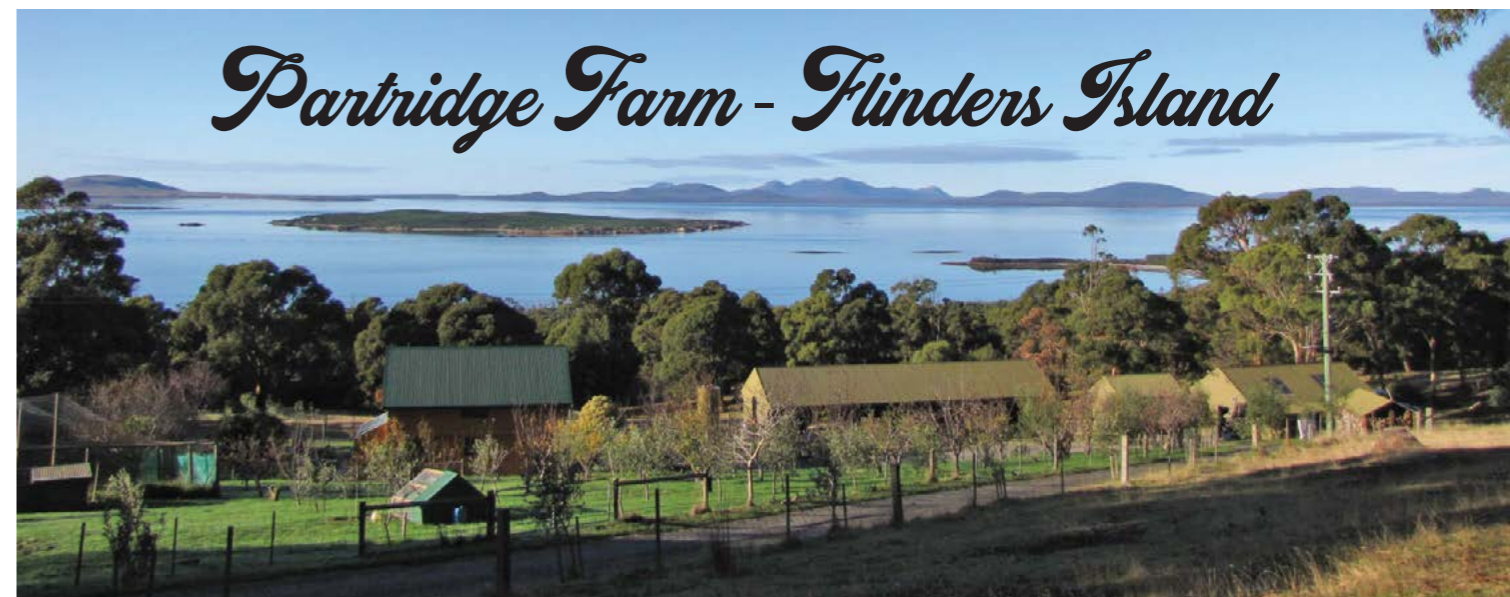
SHARP ESSENDON AIRPORT  
03 9374 3987

freight@sharpairlines.com.au

SHARPAIRLINES.COM  



## Partridge Farm - Flinders Island



Partridge Farm B&B and self contained 4 1/2 star holiday accommodation is situated on the southern end of Flinders Island, amongst the eucalyptus trees overlooking Franklin Sound and the outer Furneaux Islands.

A perma-cultural paradise, deer, Boer goats, Dorper sheep and Cape Barren geese roam the paddocks whilst partridges, guinea pigs, chooks and ducks roam free range in the fruit orchard and underneath the olive trees.

Partridge Farm has four unique accommodation options all with panoramic views and the property can host up to 12 people comfortably.

- \* Hire Car available on request
- \* Meals can be provided and delivered to your door
- \* A great selection of wine and beer available

To find out more contact  
Lorraine and Rob Holloway on 03 6359 3554 or visit  
[www.partridgefarm.com.au](http://www.partridgefarm.com.au)

# NO ORDINARY Shopping TOUR!

ENJOY A FULL CULTURAL EXPERIENCE  
WHILE SUPPORTING ETHICAL FASHION



**The** walking tours of Melbourne's fashion precincts is the best way to explore your personal style and to discover independent, beautifully-made and unique fashion and accessories — all ethically made and/or designed in Melbourne.

Learn while you walk with personal style specialists, Donna Cameron and Briar Jasper-Batson, who will teach you about shape, colour and fit as they take you to meet independent fashion and accessory designers.

There are no large groups, crowds or buses. This is not about fast fashion or buying as much as you can carry. The tours speciality is to provide you with a personal experience and lots of attention. They host only small, intimate groups with a passion for quality, independent, ethical and sustainable fashion.

No two tours are the same... they have numerous excellent designers and quality fashion producers in the cultural and creative city of Melbourne.

And it's not just about fashion; this is a true cultural experience.

"There's never been a better time to support locally made products and the small businesses that add colour and uniqueness to our wonderful city" said Donna Cameron, Co-founder.

Your hosts Donna & Briar talk to you about the history of the places you visit and show you the best places to find a gourmet delight and to enjoy a quiet drink.

You will meet some of the best independent, ethical and sustainable fashion designers in Melbourne.



## BRIAR JASPER-BATSON

Briar has lived all over Australia and travelled widely. She's lived and worked alongside many people from very different walks of life. This experience of diversity has made her appreciate how absolutely everyone has something of value to offer. She believes in fresh starts and second chances and advocates for strength through diversity.

She has previously worked in hospitality, as a graphic designer, an interior decorator and ran her own plus size clothing boutique.

In her role as an image consultant, Briar uncovers the hidden potential of her clients and smashing their old self-perception is what she finds most rewarding. She takes them on a journey of self-discovery and gives them permission to set their own standards; in both their wardrobe and their life.

Briar helps her clients to define what sets them apart. She shows them how their difference is a strength, not a weakness, and is passionate about body positivity.

She was President of AICI (Association of Image Consultants International) Melbourne Chapter from 2017-18 and is a Fashion Feng Shui Facilitator.

## DONNA CAMERON

Donna has facilitated workshops on personal style and presentation for over a decade in both Australia and London. She was President of the Association of Image Consultants International (AICI) Melbourne Chapter in 2015-17, Associate Editor of AICI GLOBAL magazine for three years and is a member of the Federation of Image Professionals International.

Donna was lead stylist on the groundbreaking 'Access to Fashion' runway event featuring models with disabilities. Her enthusiasm, flexibility and 'out of the box' style, along with her empathy and ability to demonstrate inclusiveness, enables her to forge strong connections with clients.

She has a life-long love of colour; in 2019 the NGV invited Donna to speak at their Colour: Educator Enrichment Program. In 2021 she launched her book 'COLOUR: the Secret to Creating a Sustainable Wardrobe' as part of the NGV's Melbourne Design Week.

Donna is available for private colour and style consultations.



They don't do big buses and big crowds.  
They don't do outlets and bargain bins.

The tours are as much  
a cultural experience  
as they are a stylist-led  
fashion tour.

"This was an amazing day; lots of fun and  
laughter. Starting with champagne and ending  
with three skirts and one top. We did the Fitzroy  
tour and will be definitely retuning for the  
Brunswick tour!"

- ANDREA

## YOUR GUIDES

Your guides are **Personal Style Specialists** who can advise you on fashion and accessories throughout the tour.

Fashion by Foot is the brainchild of two style consultants with a passion for good design principles, sharing our knowledge of Melbourne's creative culture, doing something to slow the fast fashion frenzy and helping clients to make well-considered purchases that work for them.

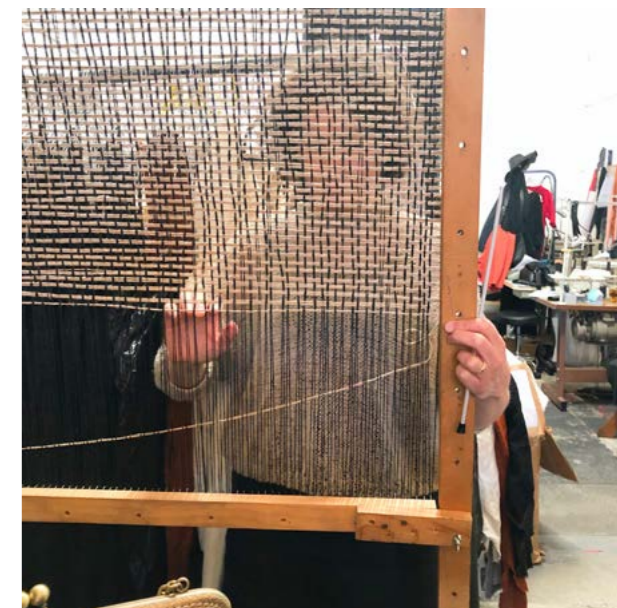
"We know Melbourne's independent fashion scene like no other tour guides!" said Donna Cameron, Co-founder.

Fashion by Foot is Australia's premier walking workshop led by professional style specialists, they will discuss colour, shape, character, construction and co-ordination

"Uncover the best independent fashion labels in Melbourne, receive personalised style advice and enjoy sparkling wine " said Briar Jasper-Batso, Co-founder

You will visit the designers, learn about personal style and how to identify what works for you. Donna and Briar are there to offer advice and answer your questions.

"The designers are exceptional, independent, innovative and producing ethical fashion. Many designers offer bespoke or custom made services – perfect if you have difficulty finding clothes to fit or you want something totally unique" explains Briar.



# TOURS



# TOURS

## A community-run museum displaying the cultural and natural history of the Furneaux Islands



SCAN ME

### OPENING HOURS

26 December – 30 April  
Tues to Sun 1.00pm – 5.00pm  
Closed Mondays & Good Friday  
1 May – 24 December  
Sat & Sun 1.00pm – 4.00pm

Visit us at 8 Fowlers Road, Emita, Flinders Island

Phone: 03 6359 8434 Email: furneauxmuseum@gmail.com

### CARLTON TOUR

Long associated with multiculturalism and university life, radicalism and gentrification, Carlton is home to grand Victorian era architecture in leafy streets as well as public housing. Carlton's recent influx of creatives has built on the popularity of its heritage and proximity to the city. Join us on a tour of this reenergised fashion precinct. Departure point is from our own Fashion by Foot Rathdowne Street headquarters.

**From \$190**

(glass of sparkling wine included)

### CITY TOURS

We have a city tour for men and another for women. Once the birthplace of Australian fashion, and formerly bustling with machinists, tailors, dressmakers and designers, Melbourne's CBD has undergone a regeneration. Famous for its laneways of bars and cafes, we take you to meet contemporary fashion designers who - once again - are making Melbourne's CBD a fashion destination. Both tours depart from convenient city central locations.

**From \$190**

(glass of sparkling wine included)

### FITZROY TOUR

As Melbourne's first suburb, Fitzroy's reputation for being Melbourne's cultural centre is firmly established with its colourful collision of cafes, galleries and studios (home to some of Melbourne's finest artists and designers). Enjoy 19th-century architecture and cultural history as we walk through Fitzroy's vibrant streets and visit its talented designers. Departure point is an iconic local bar, to be revealed upon booking.

**From \$190**

(glass of sparkling wine included)



# WHERE TO GO Fishing on King Island

Currie, King Island  
Credit: Stu Gibson



Currie wharf  
Credit: Adam Gibson



Currie wharf  
Credit: Adam Gibson



Currie wharf  
Credit: Adam Gibson



Currie wharf  
Credit: Adam Gibson



Currie Harbour area  
Credit: Adam Gibson



Currie Harbour area  
Credit: Adam Gibson



Currie wharf  
Credit: Adam Gibson

## LOCAL FISHING INFORMATION

Netting is not allowed in most rivers and estuaries. Please check the Recreational Sea Fishing Guide or Tas Fish Guide app for more information.

King Island is well-known for its large rock lobster, abalone fishing and commercial bull kelp industry (please note a license is required if you are fishing for lobster or abalone)

Report any suspected illegal fishing to **Fishwatch** on **04287 655 557**

Bait can be purchased from TG & DJ Perry Pty Ltd located on the Main Street in Currie and open Monday to Friday from 9 am to 5pm, Saturdays from 9 am to 11am.

**King** Island's seafood is world-renowned and for good reason. The clean, remote waters surrounding the island are home to an abundance of sea life including King George whiting, blue-spotted flathead, barracouta, school and mako shark, garfish, squid and of course the infamous King Island rock lobster and abalone. Whether you choose to fish from the beach, a jetty or boat you'll have the opportunity to catch a range of varieties and have a great time kicking back, fishing rod in hand.

### POPULAR FISHING SPOTS

- Grassy Jetty
- Bold Head
- Naracoopa Jetty
- Sea Elephant
- Three Sisters
- Phoques Bay
- Currie
- British Admiral Point

### WHAT WILL I CATCH FROM THE SHORE?

Great surf fishing is available with the opportunity to catch Australian salmon, mullet, wrasse, gummy shark, sand flathead and snapper.

### WHAT WILL I CATCH FROM A BOAT?

From a boat you can catch King George whiting, bluespotted flathead, barracouta, school and mako shark, garfish, squid, sea sweep and luderick.



Grassy Harbour  
Credit: Andrew Wilson

# Fishing around King Island



## Fishing around King Island

### What will I catch from shore?

**Australian salmon** - taken mid-water by spinning a silver lure or casting a baited hook and sinker. Often caught around river mouths.



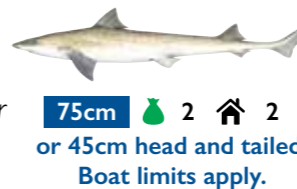
**Mullet** - caught over sand or sea grass in bays and estuaries. Taken using a small baited hook fished under a float.



**Wrasse** - caught over reef with a variety of baits and even lures. A fighting fish that dives when hooked.



**Gummy shark** - use sturdy gear with baits such as fish or squid. Hooked over sandy bottom or near beaches at night.



**Sand flathead** - caught on sandy bottom using baited hooks or soft plastics and a sinker. Tassie's most caught fish.



**Snapper** - found on reefs bounded by areas of sand. Will take baits such as fish and squid, hard body lures and soft plastics.



### GUIDE TO SYMBOLS

20cm Minimum size    15 Bag limit    30 Possession limit

### Local fishing facts

- From a boat you can also catch King George whiting, bluespotted flathead, barracouta, school and mako shark, garfish, squid, sea sweep and luderick.
- Netting is not allowed in most rivers and estuaries.
- King Island is renowned for its large rock lobster and abundant abalone stocks. There is a commercial fishery for stormcast bullkelp.
- Great surf fishing for salmon, gummy shark and mullet is available off King Island's beaches.

### Licences

You don't need a licence for rod and line fishing in marine waters in Tasmania. An Inland Fisheries licence is required for any fishing in inland waters including some river mouths and estuaries.

Licences are required for abalone, rock lobster, scallop, set line (longlines and droplines), graball net, mullet net and beach seine net fishing.

Sea Fisheries licences: [www.fishing.tas.gov.au/licence](http://www.fishing.tas.gov.au/licence)  
Inland Fisheries licences: [www.ifs.tas.gov.au](http://www.ifs.tas.gov.au)

### Catch Limits

Size and possession limits apply for most recreational species. Possession limits apply everywhere including your home.

### Fishing Rulers

Use a fish measuring ruler to measure your catch. Free rulers are available from Service Tasmania and tackle shops.



### More Information

Web: [www.fishing.tas.gov.au](http://www.fishing.tas.gov.au)

Phone app: Download the *Tasmanian Sea Fishing Guide* for iPhone or Android.

Print: Pick up a copy of the *Recreational Sea Fishing Guide* from Service Tasmania and tackle shops.



### Fishcare

Fishcare Tasmania promotes sustainable fishing. Ask Fishcare volunteers for advice at a community event near you.



### CONTACT

Recreational Fisheries Section

Visit: [www.fishing.tas.gov.au](http://www.fishing.tas.gov.au)

Email: [fishing.enquiries@dipwe.tas.gov.au](mailto:fishing.enquiries@dipwe.tas.gov.au)

Facebook: [www.facebook.com/FisheriesTasmania](http://www.facebook.com/FisheriesTasmania)



# POSTCARDS Plus EXHIBITION

Creative voices, anecdotes and reflections

The Islander Way is a community-driven project aiming to find ways to continue welcoming visitors to the Furneaux Islands while preventing the over-tourism. As a response to the project the exhibition, Postcards Plus, was held in April on Flinders Island, providing the opportunity for both locals and visitors to express their views.

## THE USEFULNESS OF ART

Art influences society by **changing opinions, instilling values and translating experiences across space and time**. Research has shown art affects the fundamental sense of self. Painting, sculpture, music, literature and the other arts are often considered to be the repository of a society's collective memory.

Art **helps with human development in terms of learning and understanding difficult concepts**, as it accesses different parts of the human brain. It allows people to problem-solve as well as make more complex concepts easier to understand by providing a visual format instead of just words or numbers.

[artincontext.org](http://artincontext.org)

The Exhibition of creative postcards provided a space for everyone to share stories, ideas and opinions.

The response to the exhibition was extremely successful with many locals, visitors and tourists expressing their many and varied views.

Visitors and locals have written comments in the journals which offer personal island experiences, deep connections, anecdotes and reflections.

Also many suggestions for infrastructure improvement, capping visitor numbers, warnings and much much more.

Through this exhibition the Furneaux Community Arts group hope to provoke and inspire the conversation around tourism and how to achieve a positive outcome the island.

The Postcards Plus Exhibition became an inspiring example of ongoing community engagement which occupies the space of change. It is disrupting the process in a positive way, using creativity as a way to express our ideas, concerns and solutions. It understands that we need to challenge and be challenged on this journey.

Contributed by **Sandro Donati**



**JLL Agribusiness**  
[jll.com.au/agriculture](http://jll.com.au/agriculture)



## Rural *ambitions*

From the Highlands to the Islands, we are Tasmania's leading rural valuation experts. Our clients comprise family farming businesses, financiers and corporates. Specialisations include:

- Irrigation
- Dairy
- Livestock
- Forestry
- Compensation & Acquisition

Talk to us about your valuation needs today

**Jack Payne**  
Jack.Payne@ap.jll.com  
0437 664 450

**Will Gurry**  
Will.Gurry@ap.jll.com  
0488 553 988

# Red DECKER

is proudly Tasmanian family owned and operated.



We have over 20 years of experience providing sightseeing tours and bus charters in and around Hobart. Our Hop-On Hop-Off City Loop Tour is the official sightseeing tour of Hobart and is a popular choice for first-time visitors to Hobart.

Our tour often gives visitors their first impression of Hobart and Tasmania. We are committed to providing the best tourist experience and delivering on what we promise every day of the year. We're delighted to deliver a key service for Hobart's transport and tourism infrastructure.

## OUR JOURNEY

In 1997 it all began with just one bus – a 1960s Leyland Atlantean closed-top double-decker – and one driver. Red Decker were the first company to operate double-decker bus tours and charters in Tasmania. Our City Loop Tour is the only hop-on hop-off tourist service in Hobart, with 20 bus stops to explore.

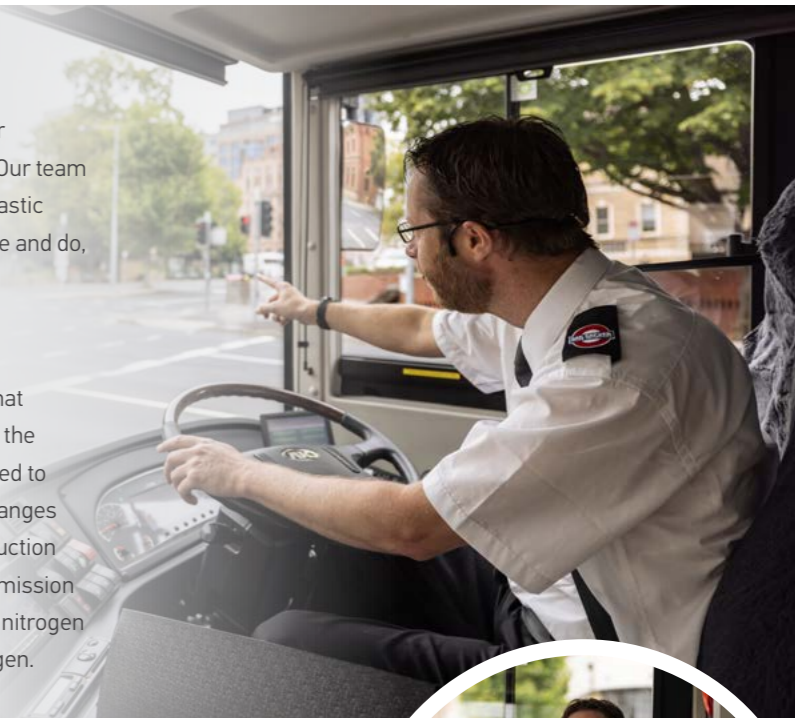
In 2013, the fleet expanded to three double decker buses with the introduction of a modern Ankaï open-top double decker. This allowed us to offer an accessible service for all abilities. Later in 2016, a second Ankaï open-top double decker joined the fleet, along with a new GPS-activated multilingual commentary system. We've since grown to a fleet of six double decker buses and a team of about 15 employees.

## THE RED DECKER TEAM

The success of Red Decker wouldn't be possible without our passionate team of experienced and dedicated individuals. Our team members are local ambassadors for our city and are a fantastic source of local knowledge. Ask our friendly staff what to see and do, or where to find that perfect gift whilst visiting Hobart.

## ENVIRONMENTALLY FRIENDLY

We love Tasmania's raw natural beauty and acknowledge that we all need to do our bit to reduce our impact and conserve the environment for future generations. Red Decker is committed to environmental sustainability and we've made significant changes to how we operate. The biggest change has been the introduction of three modern double-decker buses which feature zero emission technology. Their diesel engines are equipped to transform nitrogen oxide exhaust fumes into harmless water vapour and nitrogen.



## HOP-ON HOP-OFF CITY LOOP TOUR

Join the official sightseeing tour of Hobart; choose from 20 different stops featuring the best sights and attractions in and around Hobart. Hop-on and hop-off as many times as you like, or stay on board and do the 90-minute city loop tour – the choice is yours! Our red open-top double decker buses provide unrivalled views of this beautiful city, including local landmarks such as the River Derwent, Tasman Bridge and kunanyi/Mt Wellington as well as an abundance of colonial architecture and city streetscapes.

Hop onboard and enjoy professional and informative commentary that is available in English, French, German, Italian, Japanese, Korean, Mandarin and Spanish. Complimentary earphones are available from your driver.

The City Loop operates between 20 popular locations including the MONA ferry terminal at Brooke Street Pier, Salamanca Place, Battery Point, Wrest Point Casino, Sandy Bay Village, Cascade Brewery, Cascades Female Factory, Hobart CBD, Tasmanian Museum & Art Gallery, Maritime Museum of Tasmania, Hobart Convict Penitentiary, Hobart Aquatic Centre, The Royal Tasmanian Botanical Gardens and Victoria Dock.

**Your ticket is valid for 24 hours from the time you first board.**

## Sandro Donati Art Jeweller

Gold, Silver & Gems  
Specialising in  
natural & faceted  
Killiecrankie Diamonds

**During your stay on the island,  
if you're lucky to find some gems,  
a one-off piece can be made  
specifically for you!**

*Diamond testing available*

**1 Bowman St  
Whitemark - Flinders Island**

Facebook  
Sandro Donati Gold & Silversmith



## White Shack Studio Gallery



**Wednesday to Saturday 11.00am to 4.00pm  
or by appointment phone Sandro on 0429 383 375**



### CITY LOOP + MT WELLINGTON

A combined ticket for two iconic Hobart sightseeing tours – kunanyi/Mt Wellington Explorer Bus and Red Decker’s Hop-On Hop-Off City Loop Tour!

First up, you’ll board the kunanyi/Mt Wellington Explorer Bus and travel 1270 metres above sea level to the summit of kunanyi/Mt Wellington. At the summit you’ll have 30 minutes to visit the observation shelter and lookouts. Experience spectacular panoramic views over Hobart and southern Tasmania. Then hop back on the bus for the return journey down the mountain to Hobart.

Enjoy informative commentary from your driver as you learn all about the history and wildlife of Hobart’s beloved kunanyi/Mt Wellington. As well as significant landmarks and local tips on what to see and do on the mountain.

Now it’s time to join the second tour – the official sightseeing tour of Hobart! Hop-on and hop-off at 20 different stops featuring the best sights and attractions in and around the city. Or stay on board and do the full 90-minute city loop tour. The choice is yours! Red Decker’s open-top double decker buses provide unrivalled views of this beautiful city, including local landmarks such as the River Derwent, Tasman Bridge and Mt Wellington as well as an abundance of colonial architecture and city streetscapes.

Professional and informative multilingual commentary is available on the Hop-On Hop-Off City Loop Tour. Select English, French, German, Italian, Japanese, Korean, Mandarin or Spanish. Complimentary earphones are available from your driver. Please note that the kunanyi/Mt Wellington Tour is currently only available in English.



### CITY LOOP + RICHMOND VILLAGE

Join our tour of the historic village of Richmond, known for its beautifully preserved, Georgian architecture and home to Australia’s oldest bridge, colonial gaol and Catholic Church. Richmond is a hub for gourmet food and wine lovers. Visit shops, galleries, historic sites, and eateries with exclusive attraction discounts.

Your 48-hour CITY LOOP ticket allows you to re-join the official sightseeing tour of Hobart; choose from 20 different stops featuring the best sights and attractions in and around Hobart. Hop-on and hop-off as many times as you like or stay on board and do the 90-minute city loop tour – the choice is yours! Our red open-top double decker buses provide unrivalled views of this beautiful city, including local landmarks such as the River Derwent, Tasman Bridge and kunanyi/Mt Wellington as well as an abundance of colonial architecture and city streetscapes.

Professional and informative multilingual commentary is available on the Hop-On Hop-Off City Loop Tour. Select English, French, German, Italian, Japanese, Korean, Mandarin or Spanish. Complimentary earphones are available from your driver. Please note that the Richmond Village Tour is currently only available in English.



### CITY LOOP + ZOO DOO ZOO

Please meet us at Tasmanian Travel and Information Centre at 12:45 pm on your selected day where you will commence your journey to Zoodoo Zoo. You will have 2 hours to get up-close and personal with native animals as well as exotic species.

Your 48-hour CITY LOOP ticket allows you to re-join the official sightseeing tour of Hobart; choose from 20 different stops featuring the best sights and attractions in and around Hobart. Hop-on and hop-off as many times as you like or stay on board and do the 90-minute city loop tour – the choice is yours! Our red open-top double decker buses provide unrivalled views of this beautiful city, including local landmarks such as the River Derwent, Tasman Bridge and kunanyi/Mt Wellington as well as an abundance of colonial architecture and city streetscapes.

Professional and informative multilingual commentary is available on the Hop-On Hop-Off City Loop Tour. Select English, French, German, Italian, Japanese, Korean, Mandarin or Spanish. Complimentary earphones are available from your driver. Please note that the Zoodoo Zoo Tour is currently only available in English.

## Nutrien Harcourts



**TONY MAGUIRE**  
**0417 101 392**  
 tony.maguire@nutrien.com.au

### TONY MAGUIRE UNDERSTANDS ISLAND LIFE AND FARMING...

Having grown up on Hunter Island, Tony has extensive experience with both beef and dairy farming.

Tony has 23 years experience as a rural property consultant and his knowledge of the agricultural landscape is unsurpassed.

He is well respected and has won numerous sales achievement awards in the industry.

Tony’s determination to achieve results has seen him broker many of the largest rural transactions in Tasmania.

Whether you are contemplating buying or selling or require a no obligation appraisal, please give Tony a call.



# FLINDERS ISLAND Sports & RSL Club

The focal point for sport activities on Flinders Island is the organisation commenced in 1960 as Flinders Island Golf Club. After inspecting various sites on the island to establish a golf course an 80 acre block of land on the southern boundary of Whitemark was chosen. The property was part of the Woodside family estate 'Happy Valley' between a major drainage outlet for the Whitemark area and the coastline of Parry's Bay. Its boundary on the southern end is the Nalinga Creek outlet. Members purchased the site in 1964.

**The Golf Club** – Through countless voluntary hours of labour and machinery use land was cleared and a nine hole golf course was prepared. Originally the course was established with sand greens, until 1978 when the greens were laid with turf as reticulated watering was installed throughout the course. Extra tee positions were built to give the course fifteen tees and nine greens. The fairways are lined with dense ti tree and other native vegetation and eight of the holes have sand bunkers. A water hazard was placed on the sixth and fifteenth hole in the 1990's and is a major penalty area for players. In its sixty year history the par 71 course has only been parred twice in competition. An annual three day tournament is held in June with players visiting from Tasmanian clubs. Two very successful ProAm events were held in the 1990's with

Tasmanian golf professionals coming to play. The picturesque area has players admiring the borrowed scenery of farmland, the rolling Darling Range to the east, majestic Strzelecki Peaks to the south and the seaside on the west. The Roaring Forties add a degree of difficulty on a windy day. Birdlife is prevalent on the course, and wildlife graze on the fairways early in the morning or at dusk.

Golf competition is now played throughout the year, each Friday afternoon (nine hole Chicken Run at 3pm), Saturday (12.30pm) Wednesday morning (10am for women) and Wednesday from 12 noon, for men. Visitors are welcome to play in these events or can arrange a social game on the course which is open everyday, with club hire available.



**Lawn Bowls** – the second sport facility established adjacent to the clubhouse was a lawn bowls green. In 1974 residents with an interest in this sport again voluntarily established a grass green. Participation in the sport flourished as the golf and bowls seasons were each held for six months, and many golfers played both sports. In 2013 upkeep of the lawn surface had become difficult to manage due to restricted water supply and a synthetic surface was laid. This allows all year round play. A very successful community teams event is held each February.

Visitors to the island are welcome to play in events on Saturday afternoon from 1pm, or can arrange use of bowls during the week by enquiring at the clubhouse.

Flinders Island Sports Club Inc was formed in 1974 to manage the licensed club and the sporting infrastructure.



**Netball** – one of two new sports played at what has become the island's sporting precinct is possible with the construction of a Plexi Pavé court in 2020, adjacent to the Bowls Green. Junior and Senior netball is played here with visiting teams invited to play local representative teams.

**Tennis** – after a long break of the Whitemark area not having tennis facilities the new court facility is marked for both netball and tennis. Interest is growing in the additional sports option for the community.

**RSL** – The RSL combined with the incorporated Sports body in 2003 and bases its operation at the clubhouse. A very successful annual Diggers Day has been held for over sixty years raising funds for LEGACY. Originally a golf event, both bowls and golf are now held on the day.



A vibrant licensed clubhouse is used widely by the community. Its well stocked bottle shop offers choice of beer wines and spirits.

The club has a commercial kitchen which is operated independently of the Sports & RSL Club. A large function room can seat 100 with views over the golf course and outlying islands in Parry's Bay. In the coming year areas of the clubhouse will be upgraded and renovated to give the rooms a facelift and cater for the increased number of sports participants and visitors within the club.

In the future the club will be enhanced by further developments including the proposal to build the Whitemark Community Gym near the clubhouse in 2023.

Another building project in 2022 will provide additional space for sporting participants equipment storage and administration space for the club. An existing golf buggy room built in 1978 will be replaced by a larger shed to enable golf carts to also be housed indoors.



## FLINDERS ISLAND SPORTS CLUB

Opening hours

**Wednesday 2pm – 6pm**

**Friday 2pm – 6.30pm**

**Saturday 12 Noon – 7pm**

Hours are flexible if functions are being held, and bookings may be made to hire the rooms for workshops, meetings or functions.

Volunteers continue to give valuable input to the club through the maintenance of the sporting amenities and club management to provide quality services for islanders and visitors.

**Phone 0448 905 100**

**Email: [fisportsrslclub@bigpond.com](mailto:fisportsrslclub@bigpond.com)**

**PAY FOR 6 NIGHTS & STAY FOR 7**  
MENTION THIS AD WHEN BOOKING

**sawyers bay shacks**  
Flinders Island, Tasmania  
Enquiries: 0411 255 179

Located on the waterfront on Flinders Island are Sawyers Bay Shacks. Stylish and architect designed, these shacks front a beach recently nominated by The Age as Australia's top secret beach.

[sawyersbayshacks.com.au](http://sawyersbayshacks.com.au)

# MALTHOUSE THEATRE

ANNOUNCES PART 2 OF

# 2022 Season

FEATURING THREE NEW  
AUSTRALIAN WORKS

Malthouse Theatre today unveiled the final three works in its Season 2022 line up, which include the world premieres of *Anna K* starring **Caroline Craig** (*Underbelly, Blue Heelers*), an offbeat comedy by **Ra Chapman** who is making her mainstage debut with *K-BOX*, plus *Monsters*, a co-production with **Stephanie Lake Company** starring **Pamela Rabe**, which was originally slated for 2021.

Tickets can be purchased from:  
[malthousetheatre.com.au](http://malthousetheatre.com.au).



**ANNA K**

Comissioned by Malthouse Theatre and written by award-winning Australian playwright **Suzie Miller** (*Prima Facie*), *Anna K* weaves a breakneck story of romance, love, power, and justice.

Anna Kay—a top rating television journalist, mother and wife—is now a news subject herself, and the haters are piling on. After taking a lifetime to build a successful career with integrity, it has taken one simple tweet to completely unravel it. She soon discovers that no amount of credibility makes you impervious to the institutions that maintain the status quo. Truth at all costs, but best stay in your lane.

Directed by **Carissa Licciardello** and starring **Caroline Craig** (*Underbelly, Blue Heelers*) with **Callan Colley** (*This Time, Maybe*) and **Louisa Mignone** (*Wentworth*), *Anna K* will have its world premiere in the Merlyn Theatre in August.

Director **Carissa Licciardello** said, 'Suzie has such a knack for bringing these bold, complex, contemporary women to the stage—she's really on fire right now—and Anna Karenina is the perfect heroine for her to tackle next. Alongside an excellent creative team, I'm very excited to work with the much-loved Caroline Craig to bring Anna to life opposite stellar up-and-comer Callan Colley.'

## ANNA K

A Malthouse Theatre production  
12 AUGUST – 4 SEPTEMBER 2022

## PREVIEWS

Fri 12 Aug, Sat 13 Aug, Mon 15 Aug & Tue 16 Aug

## OPENING NIGHT

Wed 17 Aug  
Merlyn Theatre  
The Malthouse, 113 Sturt St, Southbank 3006

**WRITER** / Suzie Miller

**DIRECTOR** / Carissa Licciardello

**CAST** / Callan Colley, Caroline Craig, Louisa Mignone

**SET & COSTUME DESIGNER** / Anna Cordingley

**LIGHTING DESIGNER** / Paul Jackson

**SOUND DESIGNER, COMPOSER & AV  
DESIGNER** / Joe Lui

*Campaign image by Kristian Gehrardt*

## K-BOX



**Ra Chapman**, Malthouse Theatre's 2018/2019 Writers in Residence and current Artist in Residence makes her mainstage theatre debut with *K-BOX*, a comical new play about a 30-something year old Korean adoptee who brings guts and hard truths to the suburban family dinner table.

Lucy hasn't been home in a while. But she's quit her job, dumped her boyfriend, and turned up on her adoptive parents' doorstep needing somewhere to crash. And nothing seems quite as she left it. George and Shirley don't know what to do with their daughter. She's depressed, she's a mess, and she's stumbled across an old cardboard box that was once full of childhood memories but is now completely empty.

Lucy and her parents haven't always seen eye to eye on everything, but when a K-Pop star mysteriously wanders into their lives and starts asking destabilising questions about her Korean roots, new fault lines are exposed in the family unit that become impossible to hide.

Under the direction of Director in Residence **Bridget Balodis** (*Stay Woke, Because The Night* and *The Lockdown Monologues*), *K-BOX* will star acclaimed actor and burlesque favourite **Maude Davey** (*Melancholia, The Lockdown Monologues*), along with **Syd Brisbane** (*Because The Night*) and newcomers **Susanna Qian** and **Jeffrey Liu**. *K-BOX* opens in the Becket Theatre from September.

Writer and Malthouse Artist in Residence, **Ra Chapman** said, 'As a transracial adoptee my relationship with my identity can be best described as a tumultuous rollercoaster ride, which is still ongoing. *K-BOX* was inspired by the collective and palpable

grief, desire for connection, and deep love that exists within the Australian adoptee community and extended community overseas.

'I want to share with audiences the joy and devastation and the impossible choices you are faced with, when you attempt to find something you've lost, while still wanting to hold onto what you have.'

### K-BOX

A Malthouse Theatre production  
2 – 18 SEPTEMBER 2022

### PREVIEWS

Fri 2 Sep, Sat 3 Sep, Mon 5 Sep & Tue 6 Sep

### OPENING NIGHT

Wed 7 Sep  
Beckett Theatre  
The Malthouse, 113 Sturt St, Southbank 3006

**WRITER** / Ra Chapman

**DIRECTOR** / Bridget Balodis

**DRAMATURG** / Mark Pritchard

**CAST** / Maude Davey, Susanna Qian, Syd Brisbane, Jeffrey Liu

**SET DESIGNER** / Romanie Harper

**LIGHTING DESIGNER** / Amelia Lever-Davidson

**COSTUME DESIGNER** / Romanie Harper

**COMPOSER & SOUND DESIGNER** / Marco Cher-Gibard

*Campaign image by Tamarah Scott*

## MONSTERS

From November, the premiere of *Monsters* will see **Malthouse Theatre** Artistic Director, Matthew Lutton collaborate with choreographer **Stephanie Lake**, and Sydney-based writer **Emme Hoy** to create a chilling adventure into the darkness featuring stage and screen star **Pamela Rabe** (*The Testament of Mary, Wentworth*) and Stephanie Lake Company dancers.

Over four brief adrenalin filled acts, **Pamela Rabe** portrays a woman who goes searching for her sister in a chasm that has opened in a city. Conjuring the journey deep into the cavern through haunting text, she encounters metaphoric monsters and a literal monster on the way down.

Three dancers—**Samantha Hines, Josie Weise, Kimball Wong**—move in and out of the set, a dark and gaping cave, as they evoke images of hallucinations and dreams that echo in the dark below the earth.

*Monsters* takes the stage in Malthouse's Merlyn Theatre in November.

Director and Malthouse Theatre Artistic Director, **Matthew Lutton** said, 'I have been waiting and hoping to co-create a production with Stephanie Lake ever since I moved to Melbourne. The idea to create a suspenseful and Gothic-like story drew us all together, and a passion to bring actors and dancers together in a way that makes you feel like you are dreaming while awake.'

'We want to welcome audiences back to a live experience that causes the hair to lift on the back of your neck, and the joy of imagining what you see in the dark when the lights are turned off.'

Choreographer and Stephanie Lake Company Artistic Director, **Stephanie Lake** said, 'What a thrill to be co-creating *Monsters*

with Matthew Lutton and this brilliant team of performers and collaborators. I've been a long-time admirer of Matt's work and after years of dreaming and scheming, it's such a joy to finally bring this show to the stage.

'With its fusion of choreography, text, sound and design, *Monsters* is a work that is bodily, visceral and frightening with a ripping story and magnificent dancing.'

### MONSTERS

A Malthouse Theatre and Stephanie Lake Company co-production  
24 NOVEMBER – 11 DECEMBER 2022

### PREVIEWS

Thu 24 Nov & Fri 25 Nov

### OPENING NIGHT

Sat 26 Nov  
Merlyn Theatre  
The Malthouse, 113 Sturt St, Southbank 3006

**CREATED BY** / Matthew Lutton, Stephanie Lake and Emme Hoy

**WRITER** / Emme Hoy

**DIRECTOR** / Matthew Lutton

**CHOREOGRAPHER** / Stephanie Lake

**CAST** / Pamela Rabe, Samantha Hines, Josie Weise, Kimball Wong

**SET AND LIGHTING DESIGNER** / Paul Jackson

**COSTUME DESIGNER** / Kat Chan

**SOUND DESIGNER** / Marco Cher-Gibard

*Campaign image by Justin Ridler*



## GLOBAL HIT MUSICAL

# COME FROM AWAY

LANDS IN MELBOURNE IN AUGUST AND SYDNEY IN NOVEMBER

Producers Rodney Rigby and Junkyard Dog Productions today announced that worldwide smash hit, Tony and Olivier award-winning musical COME FROM AWAY will play at Melbourne's Comedy Theatre from 27 August, with a season at Theatre Royal Sydney from 5 November.

Producer Rodney Rigby said, "COME FROM AWAY is the perfect show for our time; an opportunity to come together and celebrate an inspirational story of hope and

humanity. The reception for this show across Australia has been ecstatic and we are thrilled to be sharing it with audiences in Melbourne and Sydney again later this year."

Melbourne has had a love affair with this world class production, taking the city by storm when the musical premiered in July 2019. Enjoying months of standing ovations and universal acclaim, it went on to break box office records to become the most successful production in the Comedy Theatre's 94-year history.

The musical opened in Sydney in June 2021, immediately garnering rapturous reviews and accolades from audiences, before being ravaged by Covid outbreaks, shutdowns and restrictions.

COME FROM AWAY recommences a national tour in July 2022, premiering at HOTA on the Gold Coast, before moving to Melbourne for a strictly limited season in August, followed by Sydney in November and Canberra in 2023.

Tickets for the Melbourne season are on sale on Monday 6 June, with tickets for the Sydney season on sale on Tuesday 14 June.

COME FROM AWAY follows the incredible real-life journey of 7,000 air passengers who were grounded in Gander, Newfoundland in Canada in the wake of the September 11 tragedy. The small community that welcomed the 'come from aways' into their lives provided hope and compassion to those in need.

Award-winning writers David Hein and Irene Sankoff travelled to Newfoundland and interviewed thousands of locals, turning their stories into an inspiring musical to share with the world.

The outstanding ensemble includes Kyle Brown, Zoe Gertz, Manon Gunderson-Briggs, Douglas Hansell, Kat Harrison, Joe Kosky, Phillip Lowe, Joseph Naim, Sarah Nairne, Natalie O'Donnell, Emma Powell, David Silvestri, together with Kaya Byrne, Jeremy Carver-James, Noni McCallum, Michael Lee Porter, Alana Tranter and Jasmine Vaughns.

With book, music and lyrics by David Hein and Irene Sankoff, COME FROM AWAY is directed by Tony Award winner Christopher Ashley, choreographed by Olivier Award winner Kelly Devine (Rock of Ages, Diana), with music supervision by Ian Eisendrath (A Christmas Story, Diana), scenic design by Beowulf Boritt (Rock of Ages, Be More Chill) costume design by Toni-Leslie James (Jelly's Last Jam), lighting design by Howell Binkley (Jersey Boys, Hamilton), sound design by Gareth Owen (Diana, A Bronx Tale).

COME FROM AWAY won the Tony Award for Best Direction of a Musical (Christopher Ashley) and four Olivier Awards including Best New Musical, Best Theatre Choreographer (Kelly Devine), Best Sound Design (Gareth Owen) and Outstanding Achievement in Music. Since its Australian premiere in 2019 the production has added five Green Room awards, including Best Production and Best Ensemble, to its award tally, along with being voted Ticketmaster's 'Ticket of the Year' by Australian audiences.



For more information please visit:  
[comefromaway.com.au](http://comefromaway.com.au)





## LANO & WOODLEY ARE BACK WITH A WHALE OF A SHOW.

Moby Dick is one of the greatest stories ever told, with adventure, revenge, madness, religion and the fury and majesty of nature, all served with a side of whaling.

Frank and Colin have once again bitten off more than they can chew, as they pull up anchor on their most ambitious show yet. Will Captain Ahab's hatred of his nemesis Moby Dick send them headlong into total destruction? Will Colin's long held hatred of Frank, end in the destruction of his dickhead nemesis?

Together Lano & Woodley have made some of Australia's most loved comedy shows. Their love/haterelationship has fuelled countless ovations and slews of awards, finding new fans and devoted followers everywhere they go.

One thing is for sure, as Frank and Colin set sail with their new show, they will fill the stage with an hour of sublime, inventive and ridiculous comedy.

If there ever was a year to escape into the innocent imaginations of Lano & Woodley, it's this one.

"There are certain queer times and occasions in this strange mixed affair when a man takes this universe for a vast practical joke." Herman Melville, Moby Dick

"Col and I love creating theatrically ambitious Lano & Woodley shows. For the last eighteen months or so we've been working on our newest effort - Moby Dick. We're using the classic tale of the demented Captain Ahab and his obsession with taking revenge on the whale that bit off his leg, as a springboard for Lano & Woodley to become entangled in their own crazy and hilarious conflict with each other. We can't wait to smash a champagne bottle across its bow and launch the new show!"

### Frank Woodley

"We are going to try and convince you the show should be called Moby Dick - by the end, you may think it's more like Moby Dickheads. In the new show, an obsessed and maniacal captain tries desperately to maintain his dignity and achieve the ultimate revenge. It's also a story about Moby Dick."

### Colin Lane

"Two of our greatest virtuosos of comedy." Herald Sun, 2018

"No Australian double act flirts in such a doggedly brilliant way with comedic failure." The Age, 2021

"The stranger next to me was constantly wiping away tears of laughter, and most of us weren't far behind." The Advertiser, 2021

**WINNER** People's Choice Award, Melbourne Comedy Festival 2018

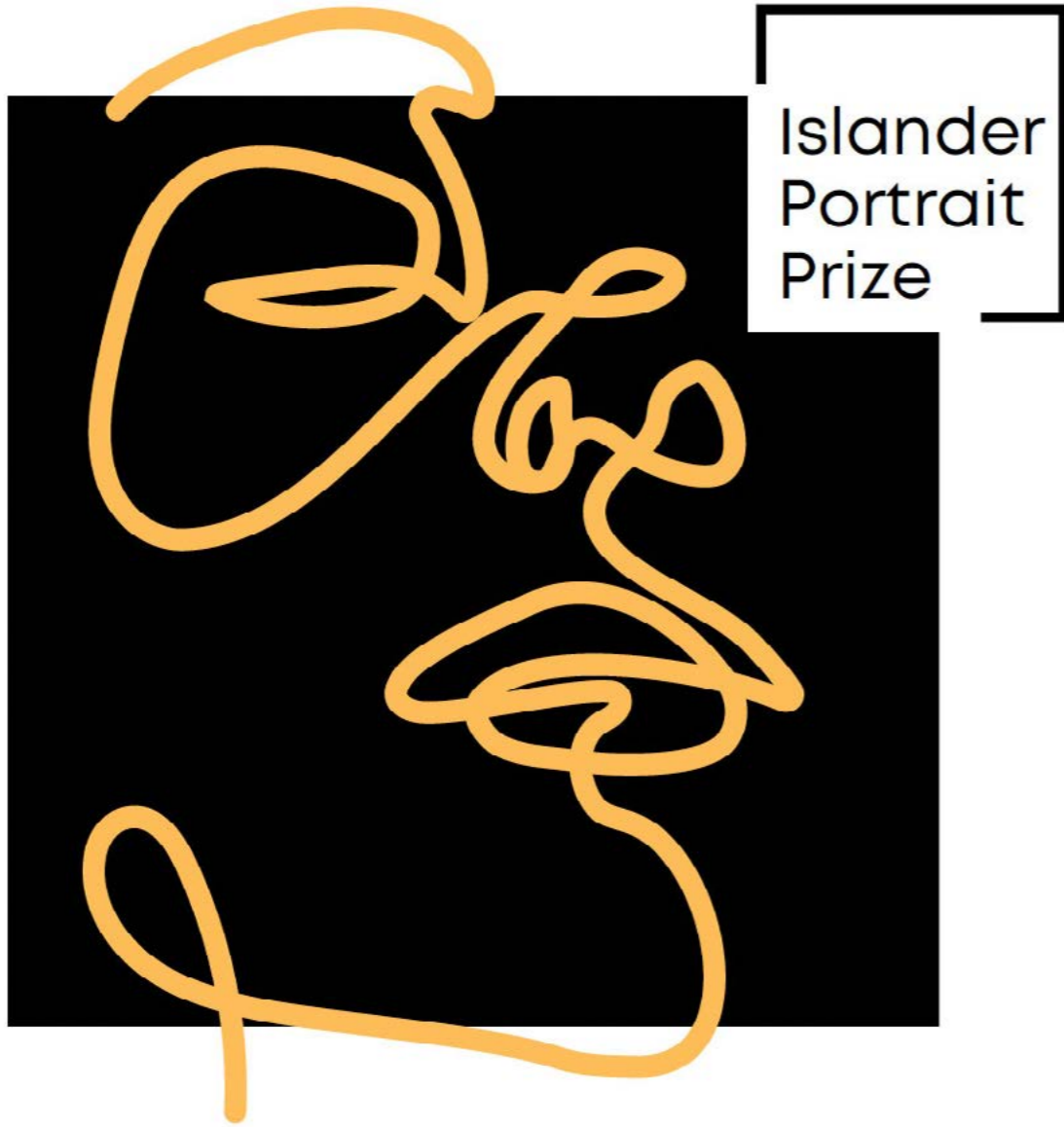
**NOMINEE** Most Outstanding Show, Melbourne Comedy Festival 2018

**NOMINEE** Helpmann Award for Best Show 2018



For more information & bookings visit:  
[ticketek.com.au](https://www.ticketek.com.au)





Islander  
Portrait  
Prize

ARTISTS ARE INVITED  
TO SUBMIT A WORK OF ART  
TO THE INAUGURAL

# ISLANDER PORTRAIT PRIZE.



For further information visit  
[www.fifestival.com.au](http://www.fifestival.com.au)

The subject matter should be a person who has a known connection to Flinders Island and each piece of work should be accompanied by a small paragraph about the person (human).

Entries can be submitted in any medium (painting, drawing, digital photography, sculpture, etc.), but the maximum dimensions cannot exceed 1.5m x 1.5m.

The exhibition will be held during the **Furneaux Islands Festival** at the Lady Barron Hall with the official opening on Sunday **15th January 2023 at 2:00pm**.

Winners will be announced 22nd January at the Community BBQ in FIAAI Park.

Cost per work to enter is \$15. Under 18 is \$5

# WHERE WE FLY CHOOSE YOUR DESTINATION



 sharp airlines  
*Our people make the difference*

# WELCOME - FESTIVAL of KING ISLAND - - FOKI 2023 -



## Fri 3rd - Sat 4th February 2023

(first bands announced in August 2022)

[www.foki.com.au](http://www.foki.com.au)    [fb/FestivalOfKingIsland](https://fb.com/FestivalOfKingIsland)

